



NATIONAL TYPE EVALUATION PROGRAM

Certificate of Conformance

for Weighing and Measuring Devices

For:

Scale System Controller
Weigh-in/Weigh-out, Software
Model: Control Pro
Version: 3.3.3.2 or Higher

Submitted By:

Murray Equipment Inc.
2515 Charleston Place
Fort Wayne 46808 IN
Tel: 800-348-4753
Contact: Shawn Patterson
Email: spatterson@murrayequipment.com
Website: www.murrayequipment.com

Standard Features and Options

- Integral Measuring Display
- Display of delivered quantity
- Batch Ticket Printing
- Electronic Tickets
- Motion Detection
- Units: lb, tn, kg, g, oz,
- Integral Weighing Display
- Customer and Product ID on Printed Tickets
- Multiple Product Batching
- Tare Capability
- Weigh In / Weigh Out capability

Minimum System Requirements:

- Windows 7 or Higher
- CPU: Intel Core i5 or higher
- System Memory: 16GB or more
- Hard Disk Drive: 256GB SSD (Solid State Drive)
- Peripherals: Monitor and printer

This device was evaluated under the National Type Evaluation Program and was found to comply with the applicable technical requirements of *Handbook 44: Specifications, Tolerances and Other Technical Requirements for Weighing and Measuring Devices*. Evaluation results and device characteristics necessary for inspection and use in commerce are on the following pages. *Editorial changes, not affecting the type or metrological content, corrected this certificate.

Gene Robertson
Chair, NCWM, Inc.

Mahesh Albuquerque
Chair, NTEP Committee
Issued: July 10, 2024

9011 South 83rd Street / Lincoln, Nebraska 68516

The National Conference on Weights and Measures (NCWM) does not approve, recommend or endorse any proprietary product or material, either as a single item or as a class or group. Results shall not be used in advertising or sales promotion to indicate explicit or implicit endorsement of the product or material by the NCWM.



Murray Equipment Inc.
Scale System Controller / Control Pro

Application: A scale system controller software that, when installed on a computer, allows automatic batching functions and weigh-in / Weigh-out capability for NTEP-certified and compatible meters and NTEP certified and compatible indicating and weighing/load receiving elements.

Identification: All markings are located by clicking the NTEP CC number along the periphery of the home screen, the batching screen and the weigh in / weigh out screen. A pop-up box with the required markings will be displayed to exit click the X in the upper right-hand corner or the ok button.

Sealing: The software performs no metrological functions so sealing is unnecessary. Seal the measuring device according to its certificate of conformance.

Operation: The operator initiates the batching sequence and proceeds automatically until each device reaches its preset value. The values of each device are displayed on the scale system controllers' computer screens. Upon completion of each batching operation, a ticket is printed.

Test Conditions: This certificate supersedes certificate of conformance 23-053 and is issued to add weigh-in/weigh-out capability to the Control Pro Scale System Controller. The system was evaluated to the National Type Evaluation Program (NTEP) Publication 14 requirements for a Weigh-In/Weigh-Out System. The software was evaluated and installed on a computer running a Windows operating system then interfaced with a Rice Lake model 480 indicating element (NTEP CC 12-123) and load cell simulator to evaluate its interaction with the weighing/load receiving element and indicating element.

Certificate of Conformance 23-053: The emphasis of this evaluation was on device design, marking requirements, performance, and operation. A Murray equipment model: Control Pro ICS was installed on a Windows 10 operating system and interfaced with an Endress Hauser model ProMag P 300 meter, and a Rice Lake indicating element (NTEP CC: 12-123) interfaced with a load cell simulator. Multiple batches were run and verified for the agreement of the meter indications to the batching system indication, agreement of the indicating element indications to the batching system indications, and multiple batches for agreement of the meter and indicating element indications with the batching system indications.

Evaluated By: J. Gibson (NCWM) 23-053 (CN 10788), 23-053A1 (CN 10948)

Type Evaluation Criteria Used: *Handbook 44 Specifications, Tolerances, and Other Technical Requirements for Weighing and Measuring Devices*, 2023 Edition. *NCWM Publication 14: Measuring Devices*, 2023 Edition.

Conclusion: The results of the evaluation and information provided by the manufacturer indicate the device complies with applicable requirements.

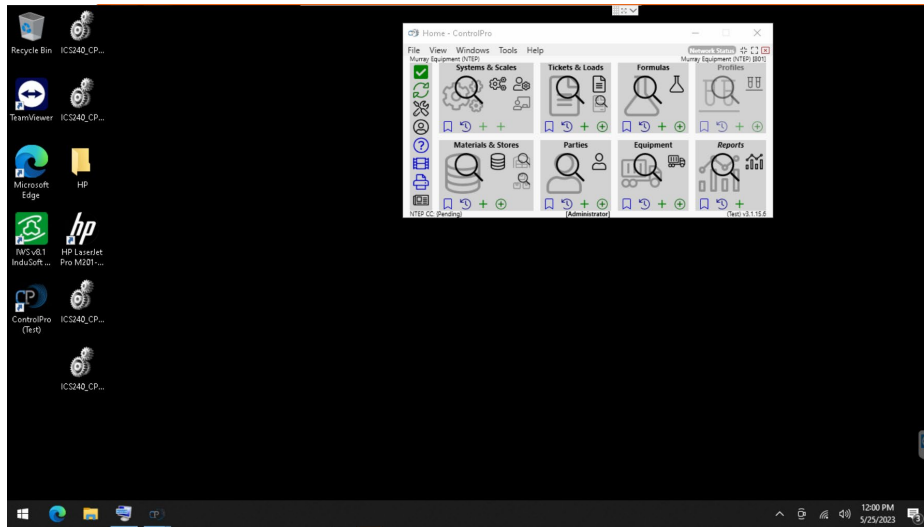
Information Reviewed By: D. Flocken (NCWM) 23-053, 23-053A1

Example of Device:



Murray Equipment Inc.
Scale System Controller / Control Pro

Home Screen



Batching Screen

Simple Systems - ControlPro

File View Windows Tools Help

160% Network Status NTEP Test (Processing)

System Search New Cancel

Ticket: 8013000027 " for MEI NTEP Test

(Status Flags)	Material Description	Type	Hand Add	Batch Units	Available Amount	Total Req.	Total Del.	Current Req.*	Current Del.*
1010	Water	Liquid No		Gallons	100.00	36	100.00	36	

Search Driver: None selected

Search Equipment: None selected

ControlPro Functionality

Controlled By: Murray Equipment (NTEP) [801]

Clear Abort Complete Process 1

HMI Functionality

Running

Reset Air Purge Start Stop HAS Complete

NTEP CC: (Pending)

Total Requested Percentage: 100.00%

Total Requested Acres: 1.00

Total Requested Gallons: 100.00

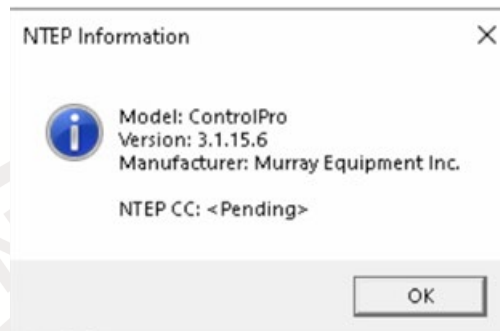
Reset Remaining

Total Delivered Gallons: 36



Murray Equipment Inc.
Scale System Controller / Control Pro

Identification display



Weigh-in / Weigh-out screen

