

Addendum Sheet

National Type Evaluation Program (NTEP) Committee Interim Report

Jerry Buendel, Committee Chair
Washington

5000 INTRODUCTION

The National Type Evaluation Program Committee (hereinafter referred to as “Committee”) submits its Interim Report to the National Conference on Weights and Measures. The Report consists of the Interim Report offered in Publication 16, “NCWM Committee Reports,” and this Addendum. Page numbers in tables below refer to pages in the Addendum.

Presented below is a list of voting and information items. Voting items are indicated by the suffice **V** or, if the voting item is part of the Consent Calendar, by the suffix **VC**. If the item is an Information item, it is indicated by the suffix **I**; if the item is Withdrawn, it is indicated by the suffix **W**. Items marked with a **D** after the key numbers are Developing items. The developing designation indicates an item has merit; however, the item is returned to the submitter for further development before any action at the national level. The Committee’s Final Report is proposed to be grouped in the following order:

Informational Item(s)

Reference Key	Title of Item	Addendum NTEP Page
5100	INTERNATIONAL	4
5100-1 I	Mutual Recognition Arrangement (MRA).....	4
5100-2 I	Mutual Acceptance Arrangement (MAA)	4
5200	ACTIVITY REPORTS.....	4
5200-1 I	NTEP Participating Laboratories and Evaluations Reports	4
5200-2 I	NTEP Sector Reports.....	4
5300	CONFORMITY ASSESSMENT PROGRAM.....	5
5300-1 I	Conformity Assessment Program.....	5
5300-2 I	Timelines for Remaining Device Categories Subject to VCAP	5
5500	OTHER ITEMS – DEVELOPING ITEMS.....	6
5500-1 I	Electronic Vehicle Fueling Systems (EVFS).....	6

Details of All Items
(In order by Reference Key)

5100 INTERNATIONAL

5100-1 I Mutual Recognition Arrangement (MRA)

No changes.

5100-2 I Mutual Acceptance Arrangement (MAA)

From January 2011 to June 2017, seventy-three NTEP certificates for load cells were issued under the MAA. The NTEP Administrator reviewed all MAA test data and drafted the NTEP certificates.

5200 ACTIVITY REPORTS

5200-1 I NTEP Participating Laboratories and Evaluations Reports

The Committee reviewed NTEP statistics through June 2017. The latest statistics are included in the addendum sheets.

5200-2 I NTEP Sector Reports

The following update is offered for the NTEP Belt-Conveyor Scale (BCS) Sector.

The NW&SA has dissolved and rejoined with NISA. The BCS USNWG and BCS Sector had been meeting simultaneously with the NW&SA for several years. The next meeting of NISA is scheduled for October 22-24, 2017 in Memphis, TN. Recent contact with Sector Chair Peter Sirrico (Thayer Scale) and Sector Technical Advisor John Barton (NIST/OWM) leads us to believe that an NTEP BCS Sector meeting may not be necessary this year due to a lack of NCWM Publication 14 agenda items. Sector members will be notified if the situation changes.

5300 CONFORMITY ASSESSMENT PROGRAM

5300-1 I Conformity Assessment Program

The Committee was given the following update VCAP compliance statistics (through June 2017).

- **Load Cells:** Since June 2016 no CCs were made inactive due to VCAP noncompliance.
 - 45 new or amended CCs were issued since June of 2016. Of the 45, only one was the first CC for the manufacturer and that manufacturer had a VCAP audit performed 3 months after the CC issue date.
- **W/LRE \geq 2000 lb w/non NTEP load cells:** Since June 2016 one CC was made inactive due to VCAP noncompliance however, that manufacturer completed their required VCAP audit in January 2017 and the CC was reactivated.
 - 10 new CCs, within this VCAP device category, were issued in this time frame. Other than the one mentioned above, all were issued to VCAP compliant manufacturers.
 - One manufacturer which previously had their CC for this device type made inactive announced it was in the process of satisfying their VCAP requirements and will reapply for these models once VCAP compliance is completed. (The decision to do this was based on the addition of Complete Scales being added to the list of VCAP devices.)
- **Indicating Elements:** Compliance deadline was June 2016 for manufacturers and December 2016 for private label CC holders.
 - Statistics:
 - 97 CC holders (manufacturers and private labelers) were in compliance by the deadline.
 - 3 manufacturers and 2 private label CC holders chose to let their combined 7 CCs go inactive.
 - Two manufacturer's and one private label CC holder are currently working to obtain VCAP compliance. The NTEP Specialist is working with all 3 as the auditor.
- **Complete Scales:** This device category has a compliance deadline of June 2018 for manufacturers and December 2018 for private label CC holders.
 - 56 new CC holding companies added to VCAP by including complete scales to the VCAP device list.
 - 55 are manufacturers
 - 1 is a private labeler.
 - 11 companies have completed their VCAP audit as of July 1, 2017.
 - With the addition of Complete Scales to the VCAP device list, two manufacturers, which had previously let CCs for load cells go inactive, informed NTEP that they are going to comply with VCAP requirements and will reapply to NTEP for new certificates for load cell.

Misc. VCAP Information:

1. To date the NTEP Specialist audited 14 companies totaling 17 locations.
2. Current audit backlog for the NTEP Specialist is 3 companies.
3. The NTEP Specialist will begin performing re-assessment audits (the 3 year cycle schedule) in mid-2018.

5300-2 I Timelines for Remaining Device Categories Subject to VCAP

No changes.

5500 OTHER ITEMS – DEVELOPING ITEMS

5500-1 I Electronic Vehicle Fueling Systems (EVFS)

No changes.



Mr. Jerry Buendel, Washington State | NTEP Committee Chair
Ms. Kristen Macey, California | NCWM Chair
Mr. James Cassidy, City of Cambridge, Massachusetts | NCWM Chair-Elect
Mr. Kenneth Ramsburg, Maryland | Member
Mr. Craig VanBuren, Michigan | Member
Mr. Jim Truex, NCWM | NTEP Administrator

National Type Evaluation Program Committee

NTEP Statistics Report: As of June 30, 2017

General NTEP Statistics	Last Year	This Year
	10/01/15 – 9/30/16	10/01/16 – 6/30/17
Total Applications Processed	(20) 297	(22) 239
Applications Completed	266	259
New Certificates Issued	240	233
Active NTEP Certificates		2049

() = Reactivations

Assignments to Labs per Year	10/1/15 – 9/30/16	10/01/16 – 6/30/17
California	37	13
Canada	3	4
GIPSA-IL	1	0
GIPSA-KC	9	5
Maryland	(4) 50	(1) 30
New York	14	(5) 21
NIST Force Group	8	4
North Carolina	10	9
Ohio	(2) 52	(2) 62
Oregon	0	0
NTEP Field	(1) 5	3
NTEP Administrator	104	92
Applications Not Yet Assigned to a Lab		3

() = Reassignments from another lab

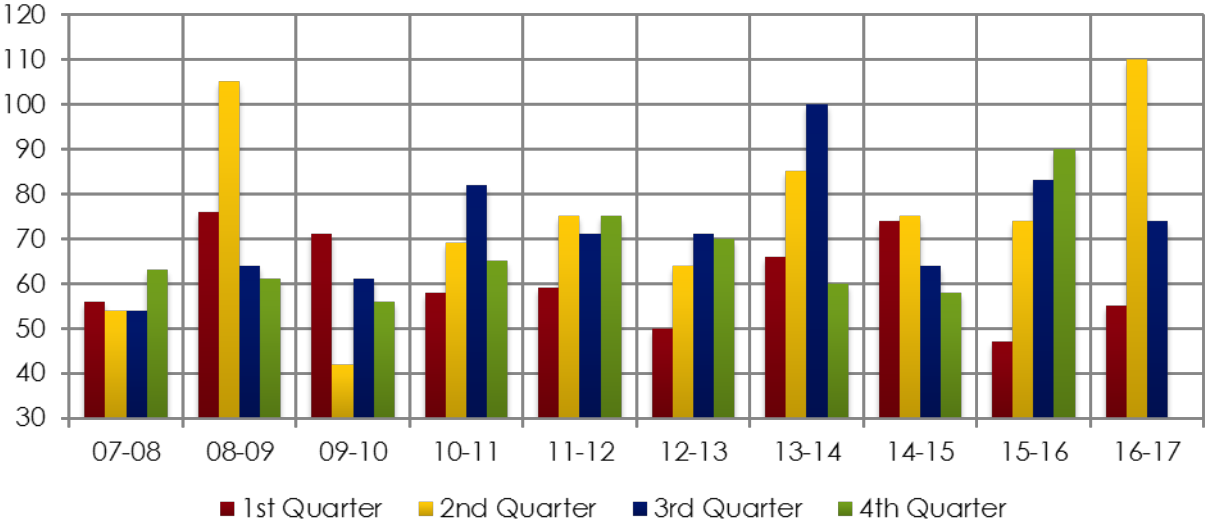
Process Statistics	10/2008 - Present
Average Time to Assign an Evaluation	4.6 Days
Average Time to Complete an Evaluation	85.1

Report on Evaluations in Progress

Evaluations in Progress	0-3 Months	3-6 Months	6-9 Months	9-12 Months	Over 1 Year	Total
June 30, 2013	53	18	6	6	19	102
September 30, 2013	44	32	5	4	21	106
December 31, 2013	41	25	24	2	24	116
March 31, 2014	53	23	13	17	11	117
June 30, 2014	55	30	14	8	19	126
September 30, 2014	44	38	18	6	19	125
December 31, 2014	44	17	17	12	16	106
March 31, 2015	43	24	10	13	17	107
June 30, 2015	39	21	12	5	15	92
September 18, 2015	28	20	8	5	12	73
December 23, 2015	43	14	5	7	13	82
March 31, 2016	48	15	7	6	8	84
June 30, 2016	57	13	7	3	7	87
September 30, 2016	60	31	9	5	7	112
December 22, 2016	34	30	21	6	9	100
March 30, 2017	45	14	6	12	7	84
June 30, 2017	42	27	5	5	11	90

In Progress by Lab	0-3 Months	3-6 Months	6-9 Months	9-12 Months	Over 1 Year	Total
California	4	3			3	10
Canada	1	3				4
GIPSA-IL					1	1
GIPSA-KC	5				1	6
Maryland	4	7	3	1	3	18
New York	4	3		3	1	11
NIST Force Group	2	1		1		4
North Carolina	1	4			1	6
Ohio	10	4	2			16
Oregon						
NTEP Staff	8	2			1	11
Unassigned	3					3

Total Pending: 90



	07-08	08-09	09-10	10-11	11-12	12-13	13-14	14-15	15-16	16-17
Oct - Dec	56	76	71	58	59	50	66	74	47	55
Jan - Mar	54	105	42	69	75	64	85	75	74	110
Apr - Jun	54	64	61	82	71	71	100	64	83	74
Jul - Sep	63	61	56	65	75	70	60	58	90	
Total	227	306	230	274	280	255	311	271	294	239

Average Per Quarter: 10-YR: 68.9
 Average Per Quarter This FY: 79.7