

Skimmer Inspection



Hal Prince

Bureau Chief, Bureau of Standards, Division of Consumer Services



Taking the Lead on the Issue

- ▶ This is a device inspection issue, per Florida Statute

(based on HB 130 UNIFORM WEIGHTS AND MEASURES LAW) we “have the authority to inspect and test commercial weights and measures kept, offered, or exposed for sale”.



Taking the Lead on the Issue

- ▶ This exceeds the authority of law enforcement in many circumstances.



Taking the Lead on the Issue

- ▶ Our inspectors are already on site and inspecting the devices.



Cooperative Effort

- ▶ Federal Enforcement
- ▶ Ag Law Enforcement
- ▶ County Sheriff
- ▶ Municipal Enforcement
- ▶ Retail Federation
- ▶ Credit Card Companies





Shifting From the Traditional Role of Inspection

- ▶ When I began, all you needed was a 5-gallon prover and a ring of keys.



Shifting From the Traditional Role of Inspection

- ▶ When I began, all you needed was a 5-gallon prover and a ring of keys.

Shifting From the Traditional Role of Inspection

- ▶ New technology offers more options for the consumer (multi product, cash, credit, point of sale, car wash, etc.)



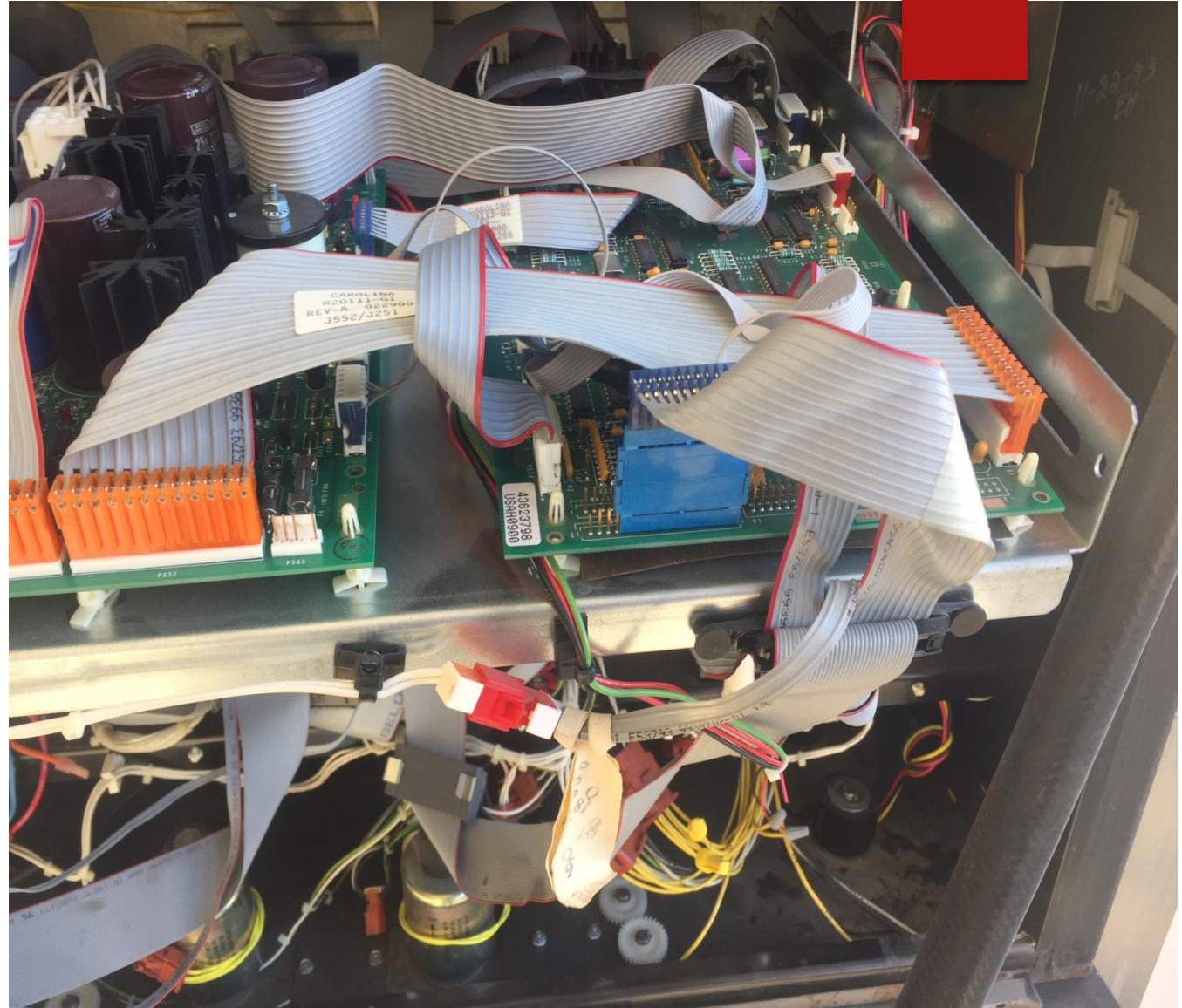
Shifting From the Traditional Role of Inspection

- ▶ New technology requires more comprehensive inspection of the device and peripherals – particularly for “point of sale” devices.



Shifting From the Traditional Role of Inspection

- ▶ New technology requires more comprehensive inspection of the device and peripherals – particularly for “point of sale” devices.



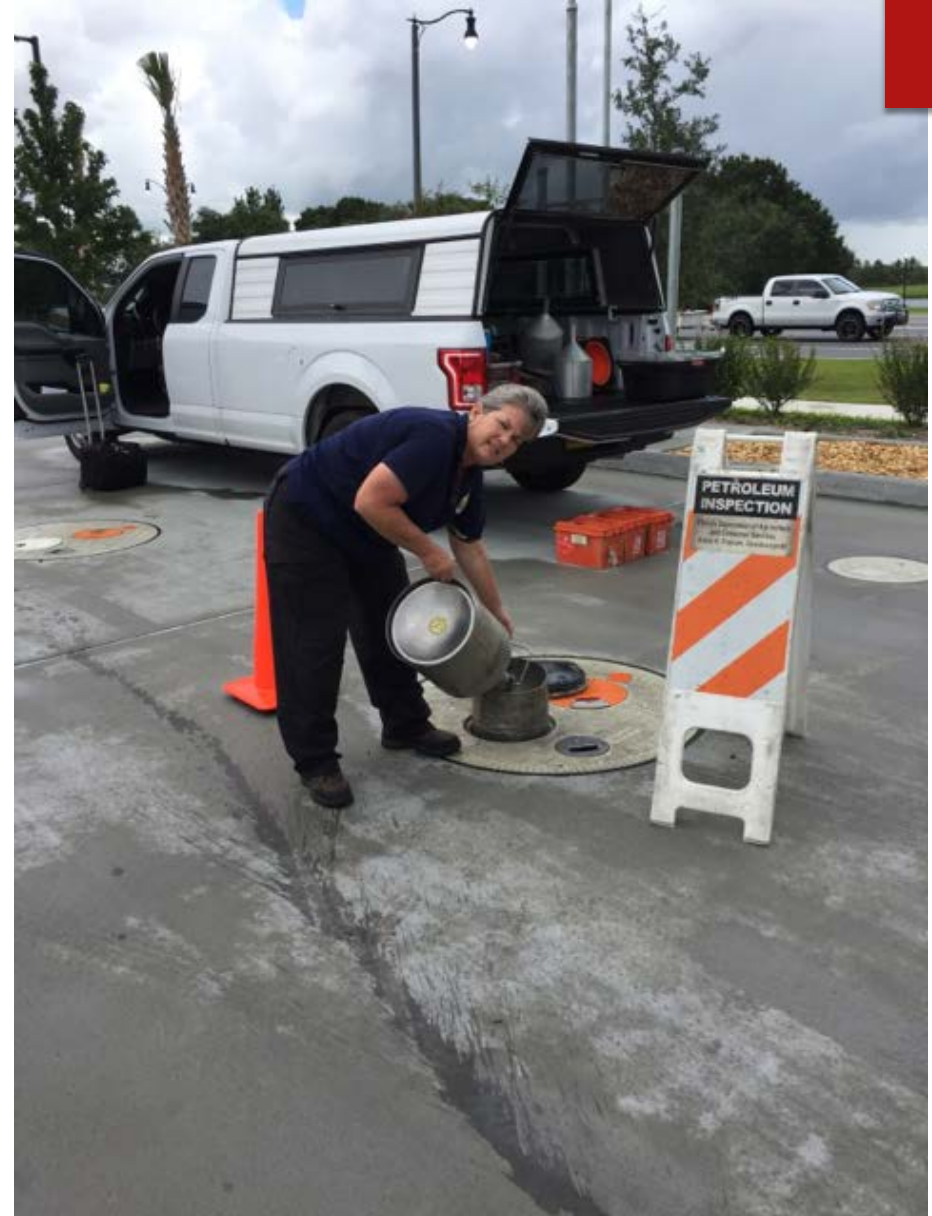
Shifting From the Traditional Role of Inspection

► Pumping



Shifting From the Traditional Role of Inspection

- ▶ and Dumping are still required to assure accuracy



Shifting From the Traditional Role of Inspection

- But a comprehensive inspection requires much more....



ECONOMICS

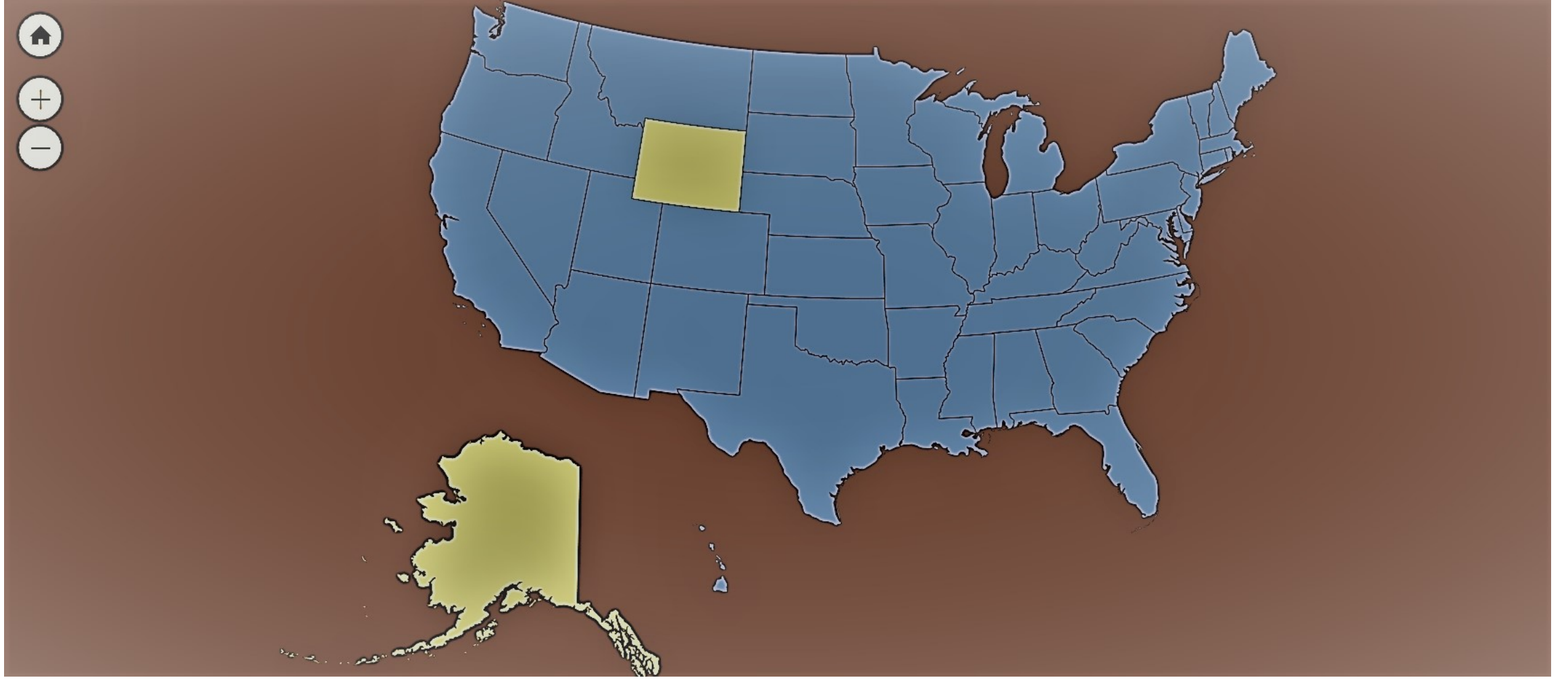
- ▶ 99.5% accuracy on RMF Dispensers in 2017
- ▶ In Florida, even if all errors were in favor of the device owner the financial impact is negligible.

ECONOMICS

- ▶ Studies indicate a skimmer can impact 100 – 5,000 consumers.
- ▶ The financial impact to the consumer ranges from \$1,100 upwards to \$5,000.
- ▶ At the conservative number of \$1,000 X 654 (skimmers found in 2017) x 100 consumers.
- ▶ Roughly \$ 65 million dollar impact to Florida consumers.

Where do we go from here?

- ▶ Some counties and municipalities are enacting more restrictive requirements.
- ▶ As other states recognize the extent of the issue, more and different requirements are bound to follow.



Where do we go from here?

- ▶ Manufacturers and operators will be faced with varying requirements.



Questions

Hal Prince

850-921-1545

850-921-1316

Harold.prince@freshfromflorida.com