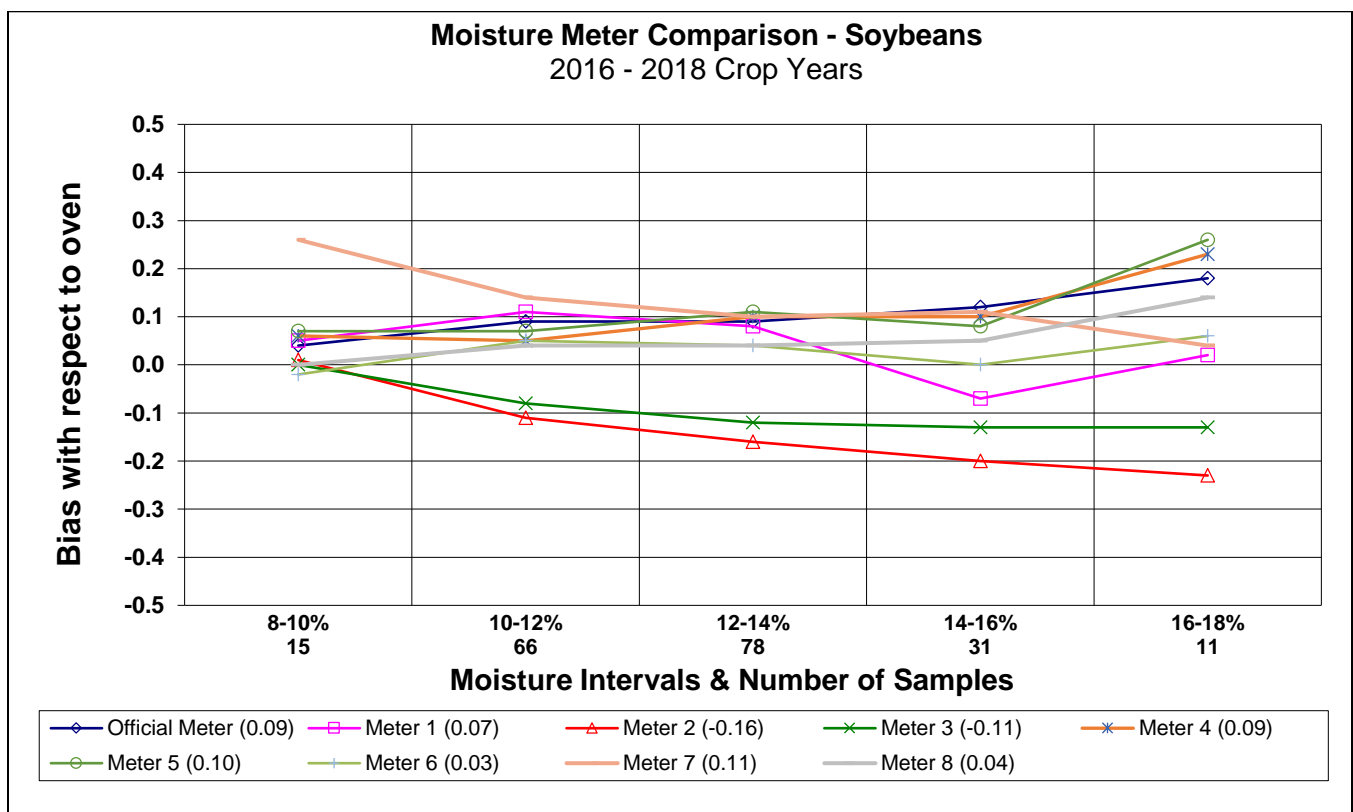
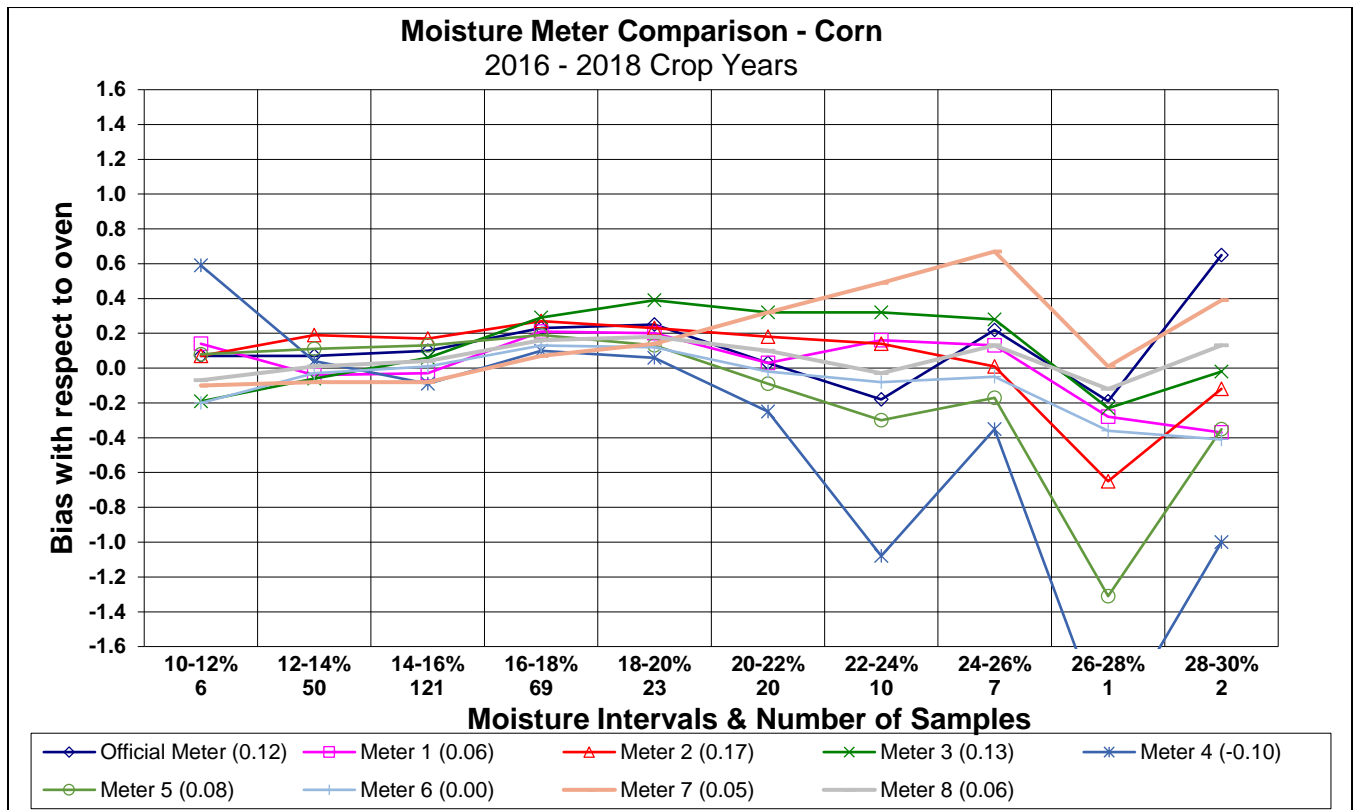
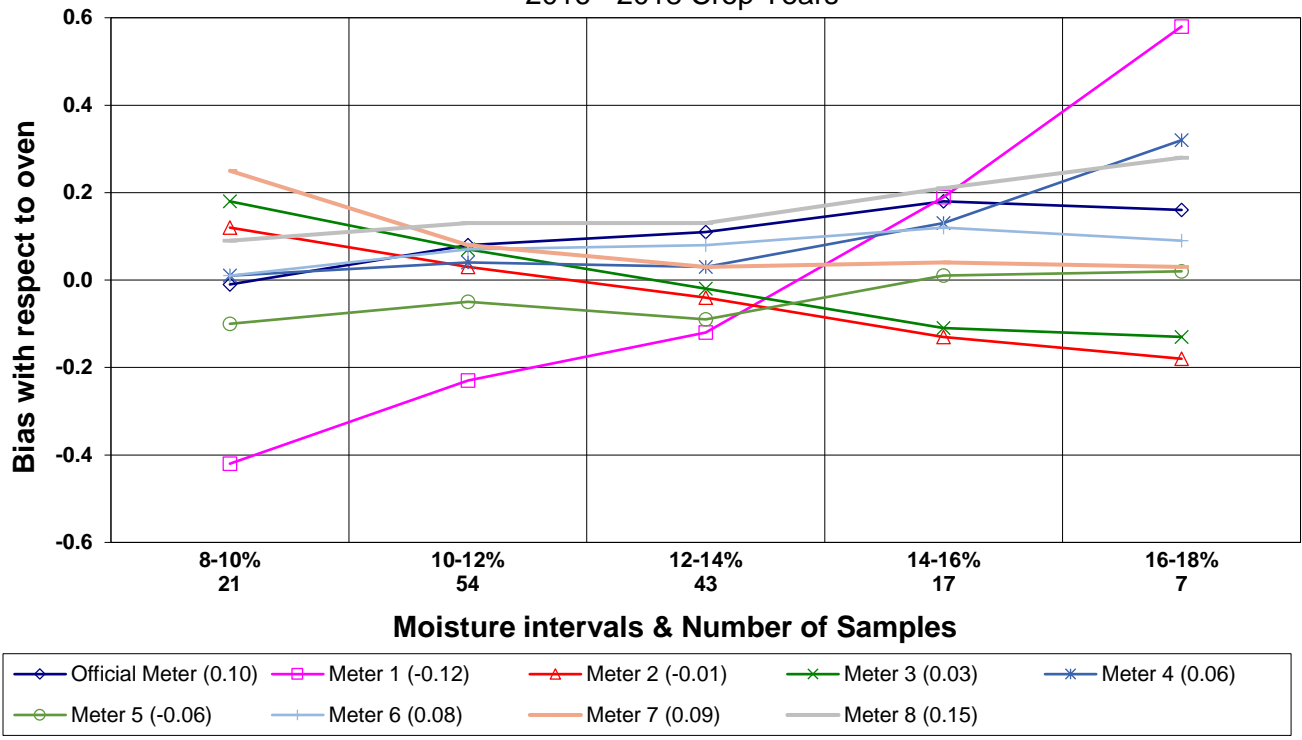


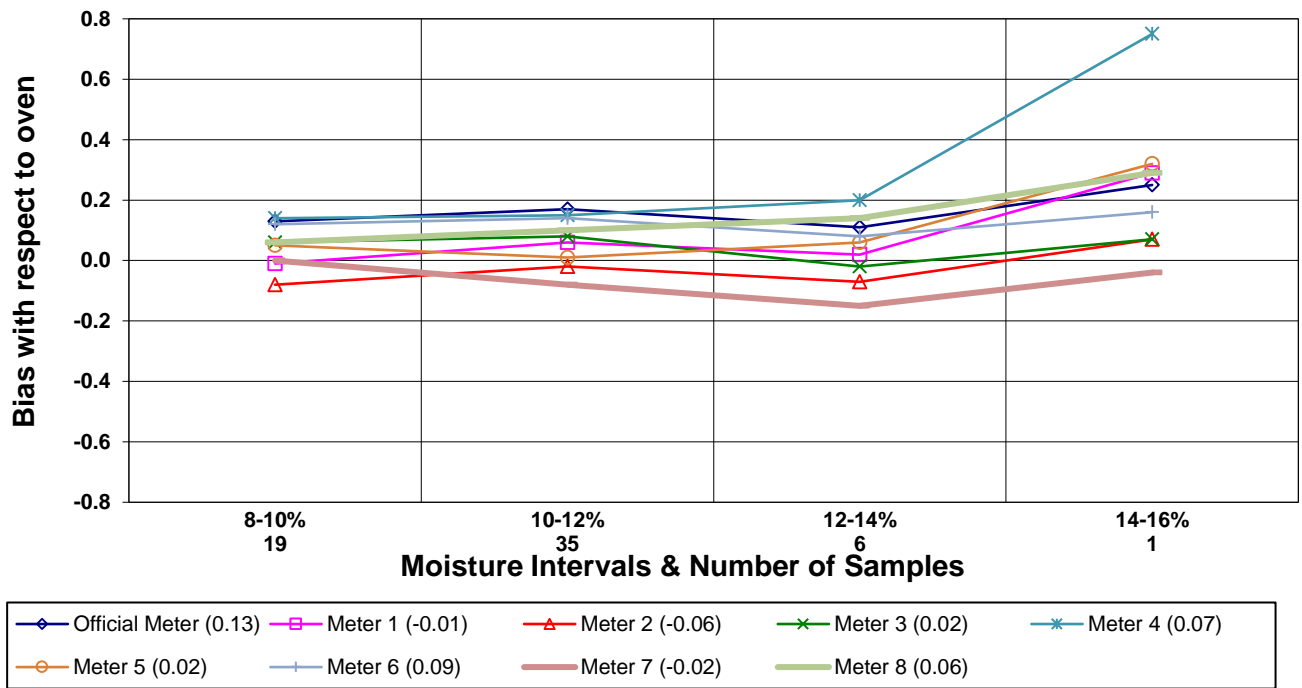
2016 – 2018 GMM Phase II Comparisons: August 2019



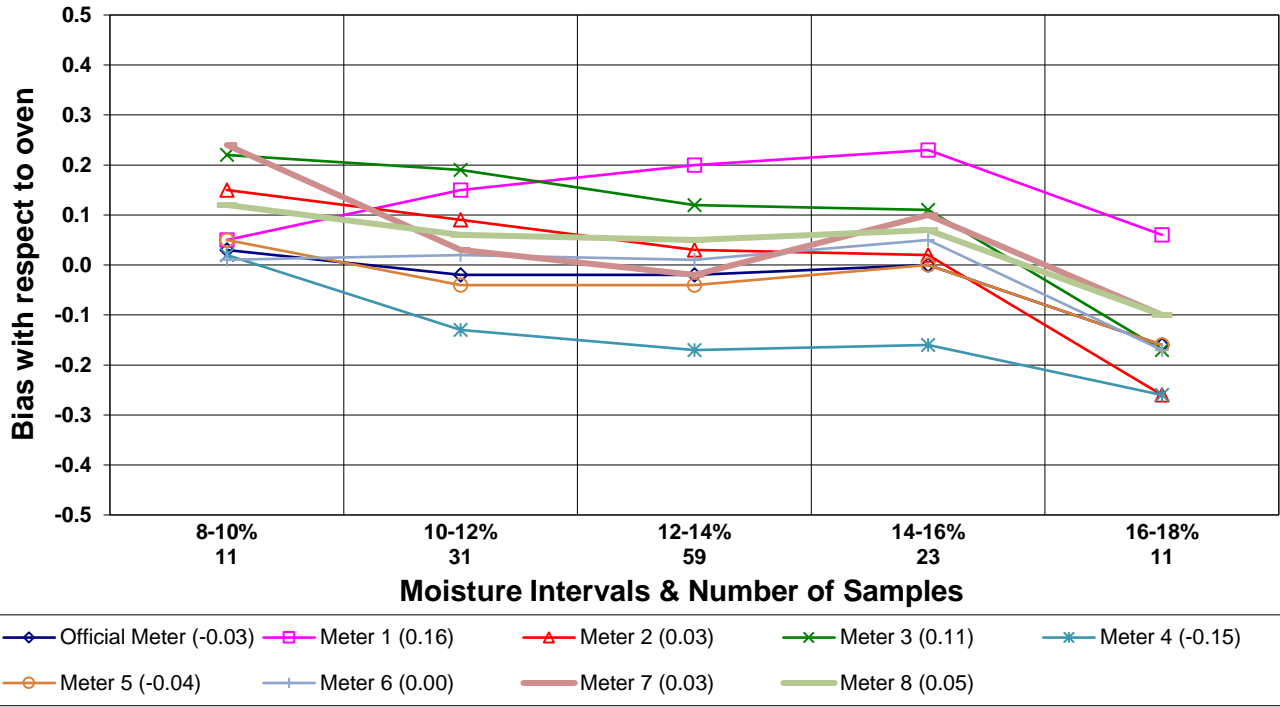
### Moisture Meter Comparison - Hard Red Winter Wheat 2016 - 2018 Crop Years



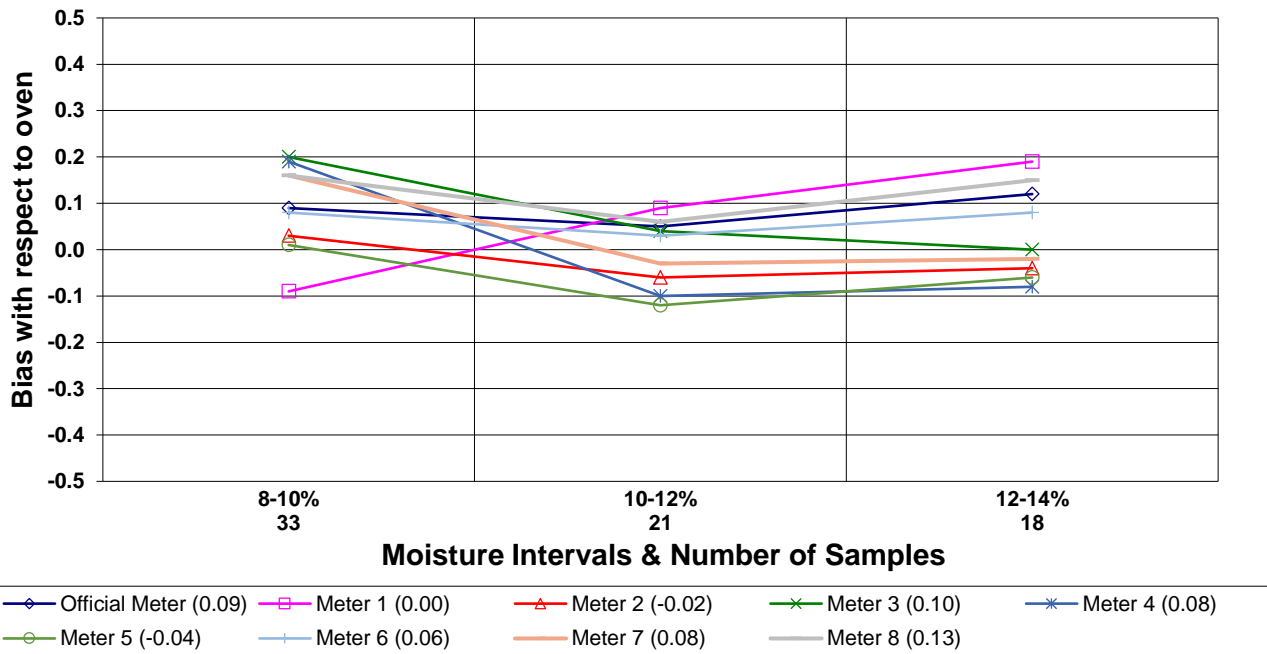
### Moisture Meter Comparison - Durum 2016 - 2018 Crop Years



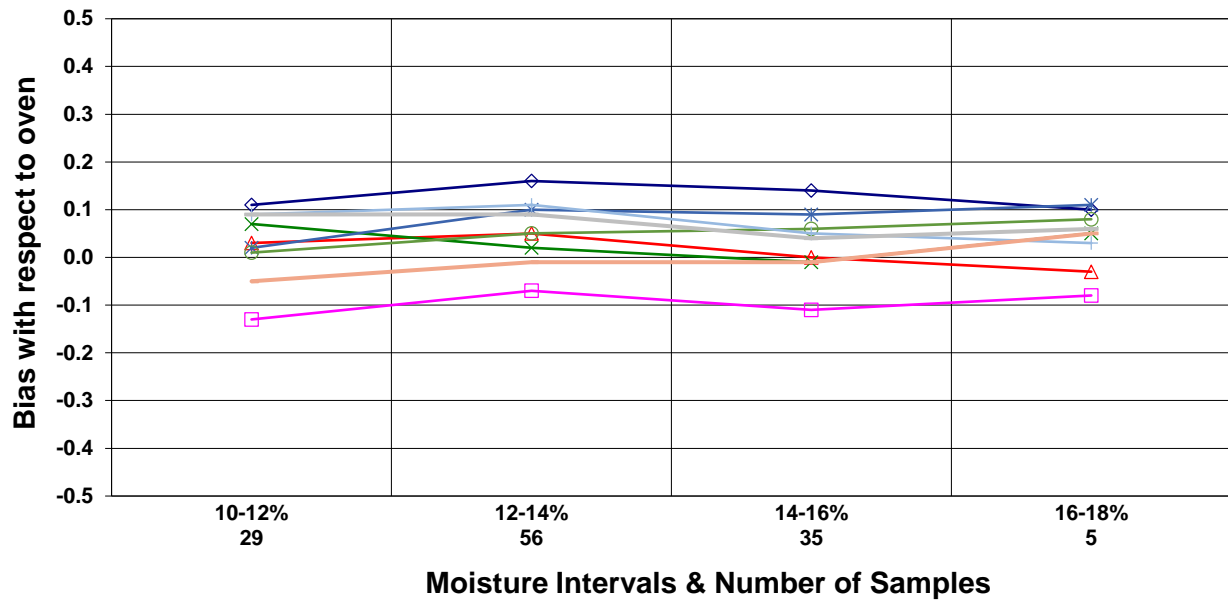
### Moisture Meter Comparison - Hard Red Spring Wheat 2016 - 2018 Crop Years



### Moisture Meter Comparison - Hard White Wheat 2016 - 2018 Crop Years



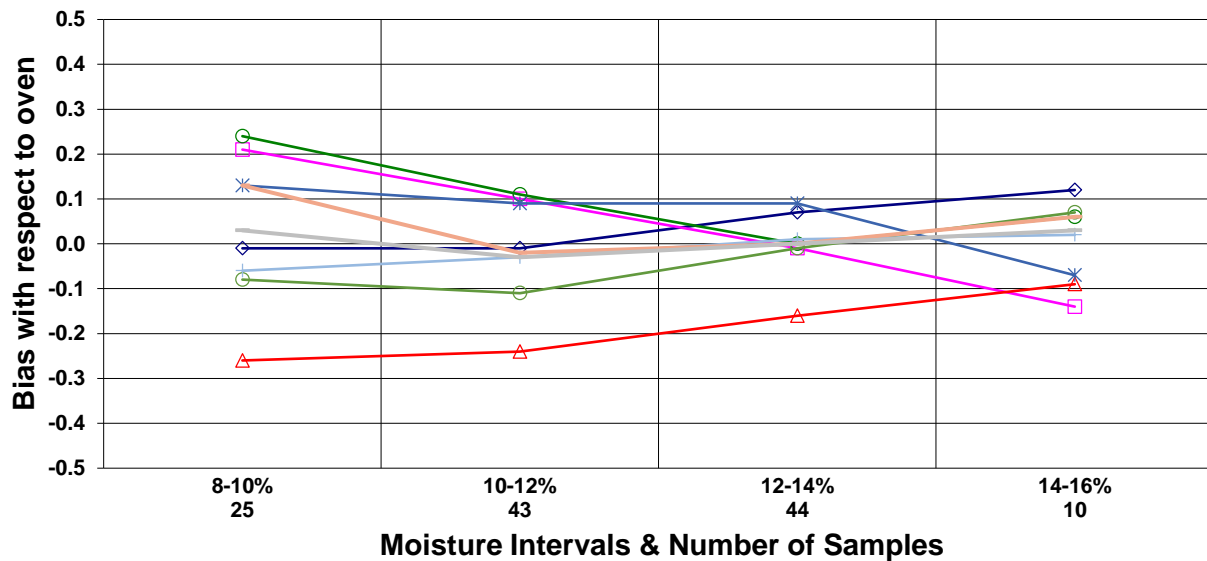
### Moisture Meter Comparison - Soft Red Winter Wheat 2016 - 2018 Crop Years



Moisture Intervals & Number of Samples

Official Meter (0.14)   Meter 1 (-0.09)   Meter 2 (0.03)   Meter 3 (0.03)   Meter 4 (0.09)  
 Meter 5 (0.05)   Meter 6 (0.09)   Meter 7 (-0.02)   Meter 8 (0.08)

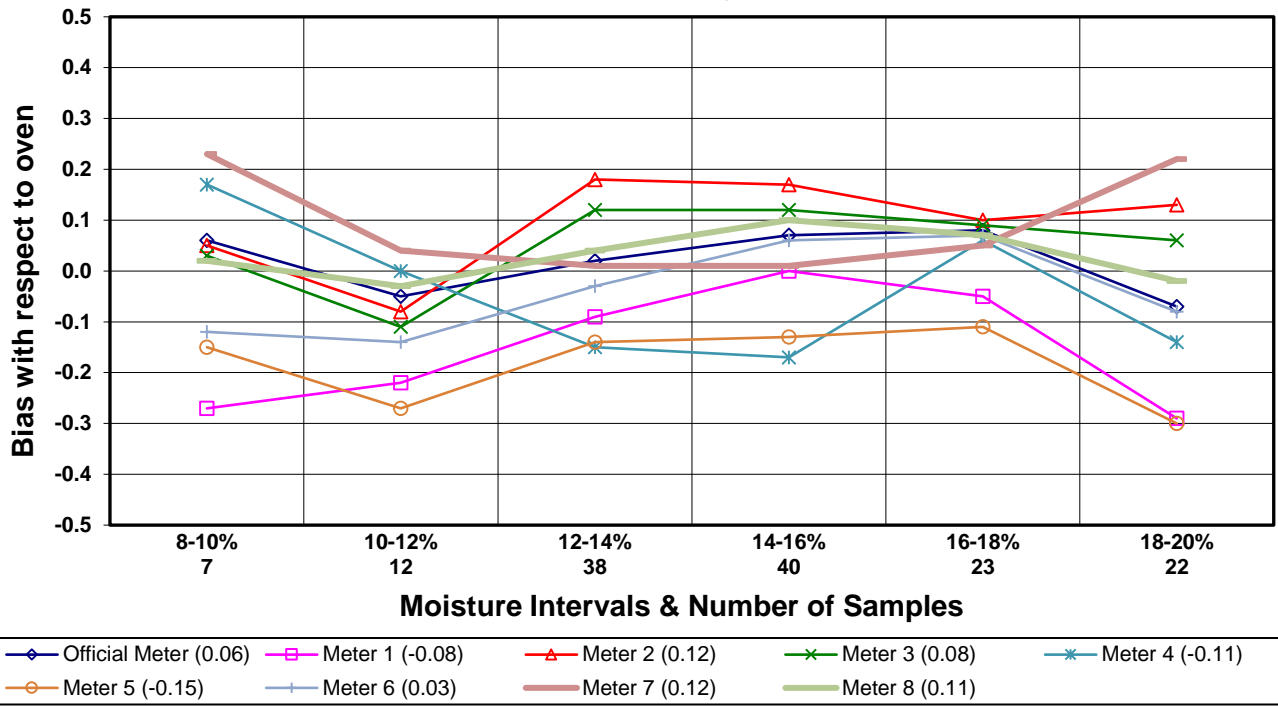
### Moisture Meter Comparison - Soft White Wheat 2016 - 2018 Crop Years



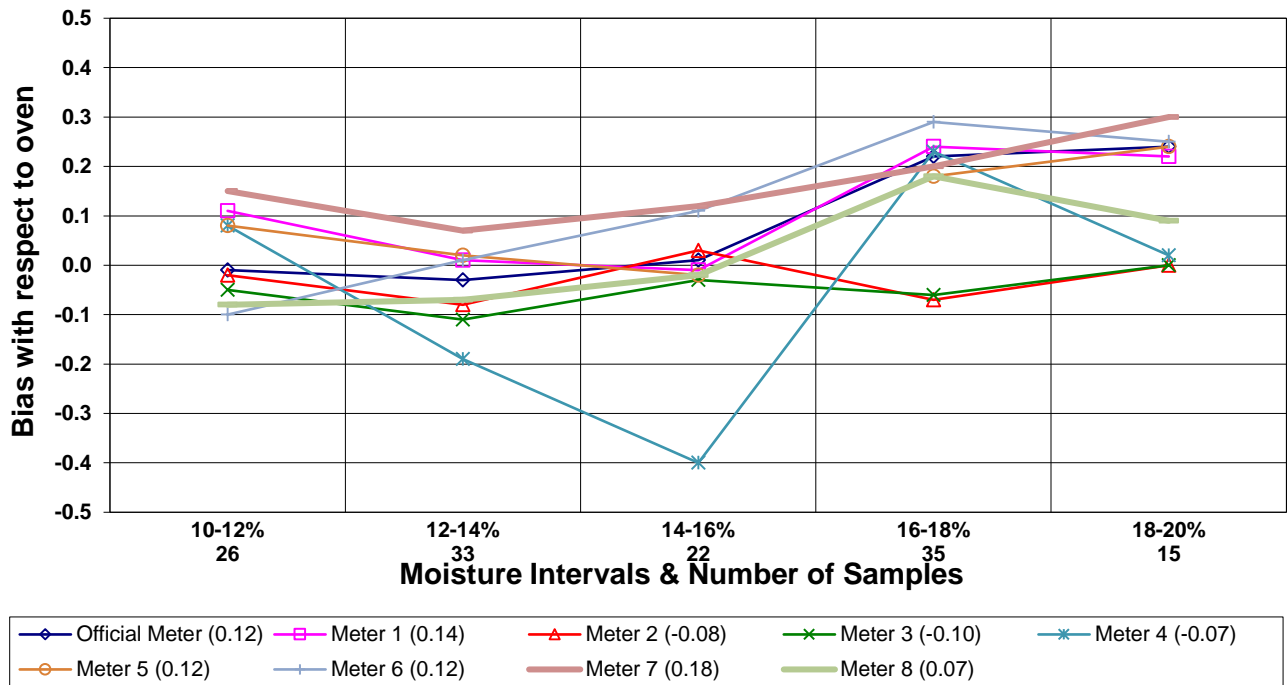
Moisture Intervals & Number of Samples

Official Meter (0.04)   Meter 1 (0.07)   Meter 2 (-0.20)   Meter 3 (0.10)   Meter 4 (0.08)  
 Meter 5 (-0.05)   Meter 6 (-0.02)   Meter 7 (0.03)   Meter 8 (0.01)

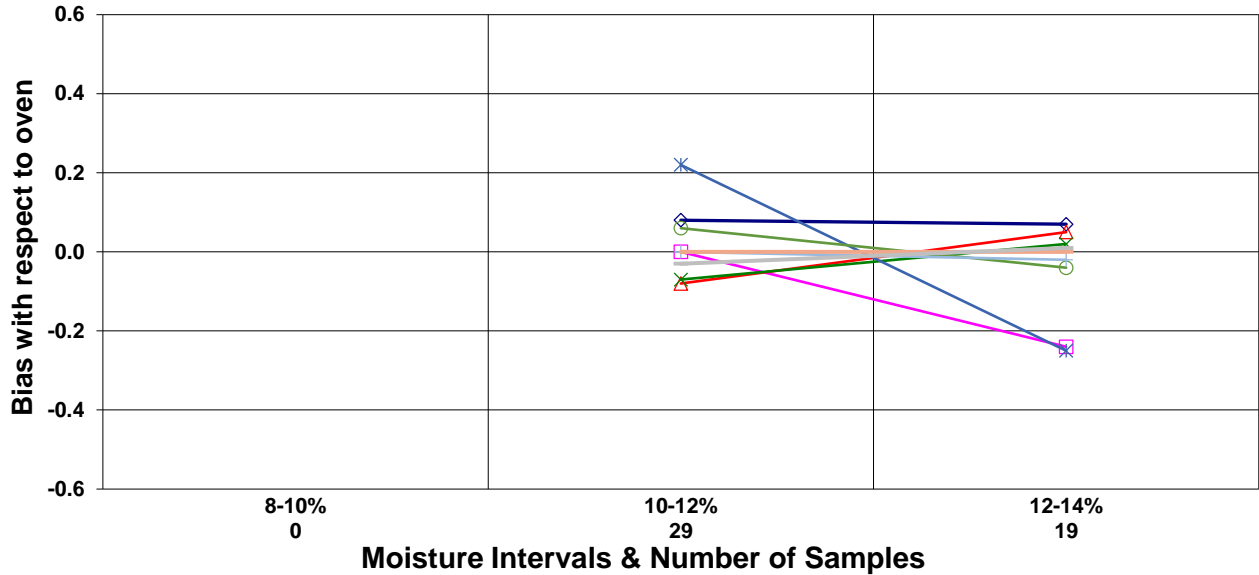
**Moisture Meter Comparison - Long Grain Rough Rice**  
2016 - 2018 Crop Years



**Moisture Meter Comparison - Medium Grain Rough Rice**  
2016 - 2018 Crop Years

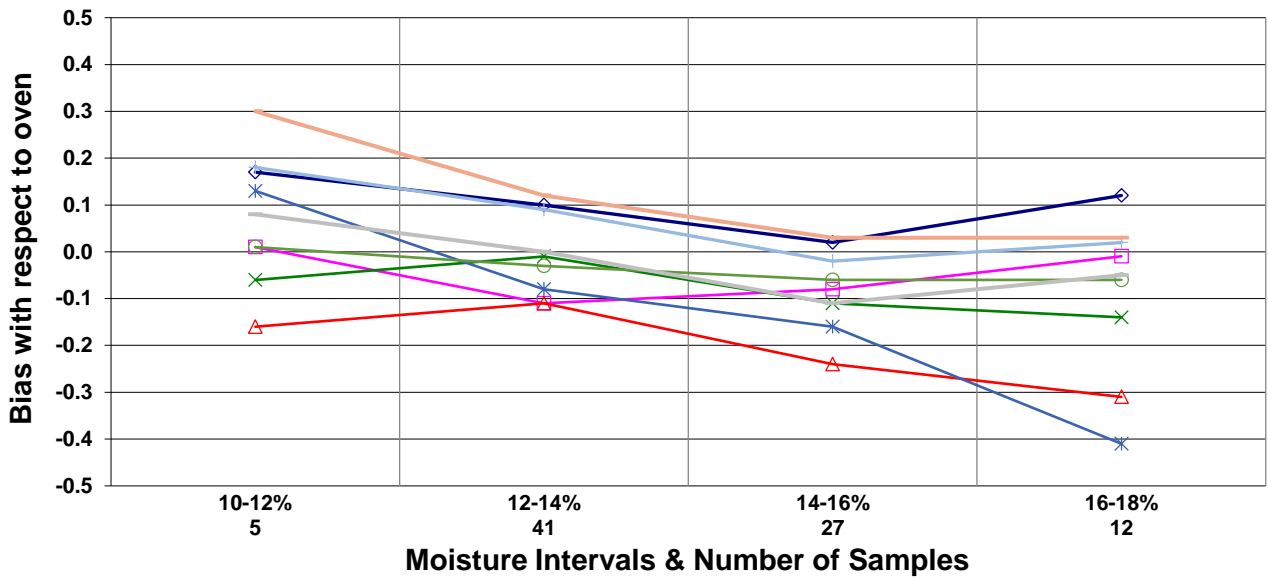


### Moisture Meter Comparison - Oats 2016 - 2018 Crop Years



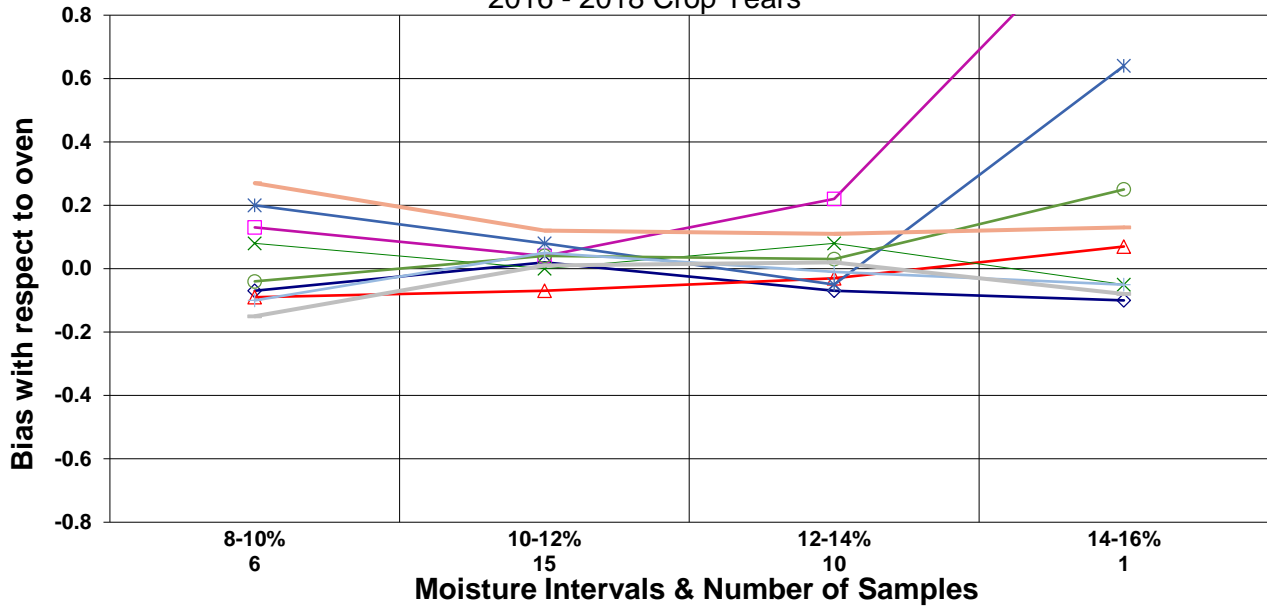
- ◆ Official Meter (0.07)    □ Meter 1 (-0.08)    ▲ Meter 2 (-0.03)    × Meter 3 (-0.03)    \* Meter 4 (0.04)
- Meter 5 (0.02)    + Meter 6 (0.00)    ○ Meter 7 (0.06)    — Meter 8 (-0.01)

### Moisture Meter Comparison - Grain Sorghum 2016 - 2018 Crop Years



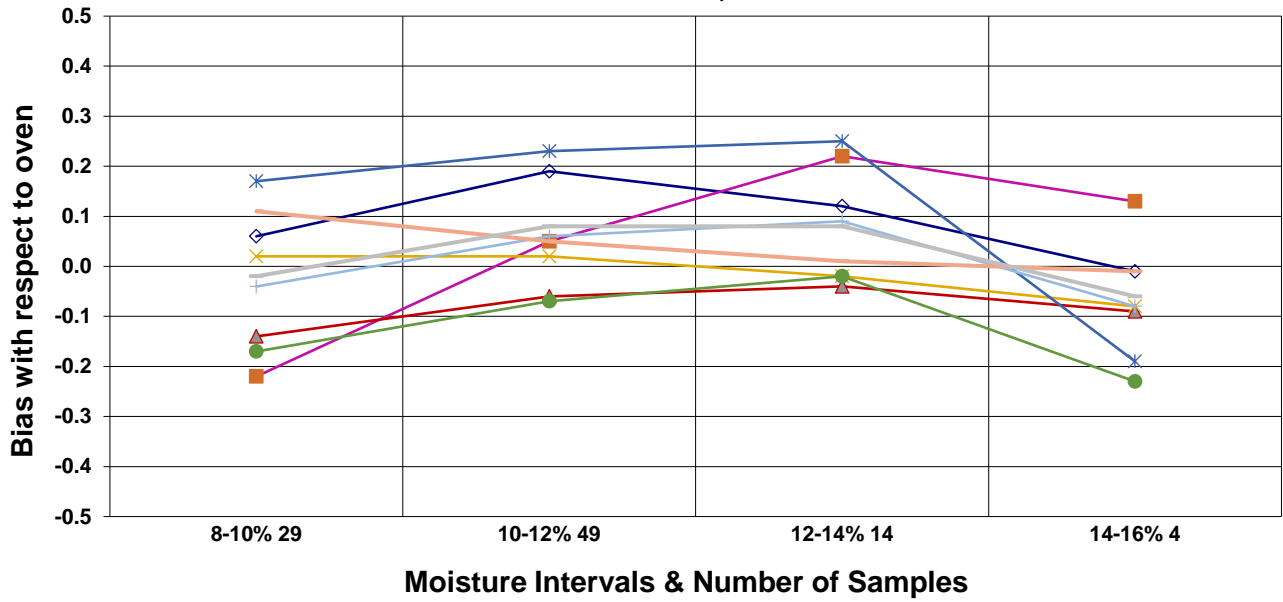
- ◆ Official Meter (0.09)    □ Meter 1 (-0.07)    ▲ Meter 2 (-0.19)    × Meter 3 (-0.07)    \* Meter 4 (-0.15)
- Meter 5 (-0.01)    + Meter 6 (0.05)    ○ Meter 7 (0.09)    — Meter 8 (-0.03)

### Moisture Meter Comparison - Six Row Barley 2016 - 2018 Crop Years



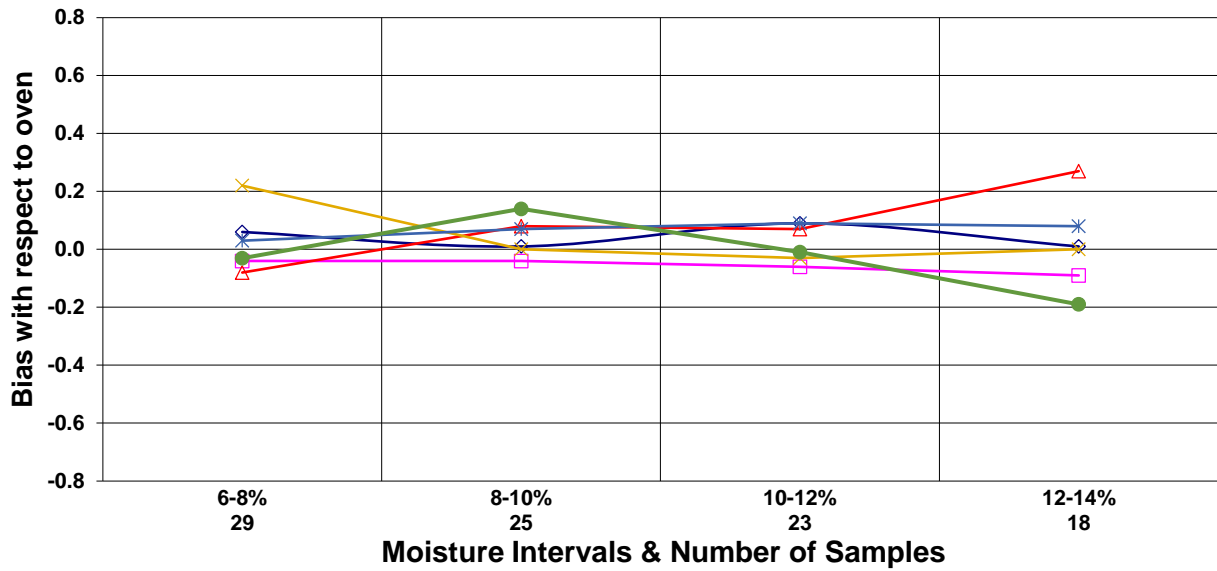
- ◆ Official Meter (-0.03)
- ◻ Meter 1 (0.15)
- ▲ Meter 2 (-0.06)
- × Meter 3 (0.04)
- ✱ Meter 4 (0.08)
- Meter 5 (0.03)
- + Meter 6 (0.00)
- Meter 7 (0.15)
- Meter 8 (-0.02)

### Moisture Meter Comparison -Two Row Barley 2016 - 2018 Crop Years



- ◆ Official Meter (0.13)
- Meter 1 (-0.01)
- ▲ Meter 2 (-0.09)
- × Meter 3 (0.00)
- ✱ Meter 4 (0.20)
- Meter 5 (-0.10)
- + Meter 6 (0.03)
- Meter 7 (0.06)
- Meter 8 (0.04)

**Moisture Meter Comparison - Sunflower Seed**  
2016 - 2018 Crop Years



◆ Official Meter (0.08)  
□ Meter A (-0.04)  
△ Meter B (0.09)  
× Meter C (0.14)  
✱ Meter D (0.09)  
● Meter E (0.00)

On May 1, 2013, the USDA GIPSA official moisture meter for all fifteen NTEP grains switched to the Unified Grain Moisture Algorithm (UGMA) technology. The Official Meter designation in the above comparison charts is for the UGMA master system.