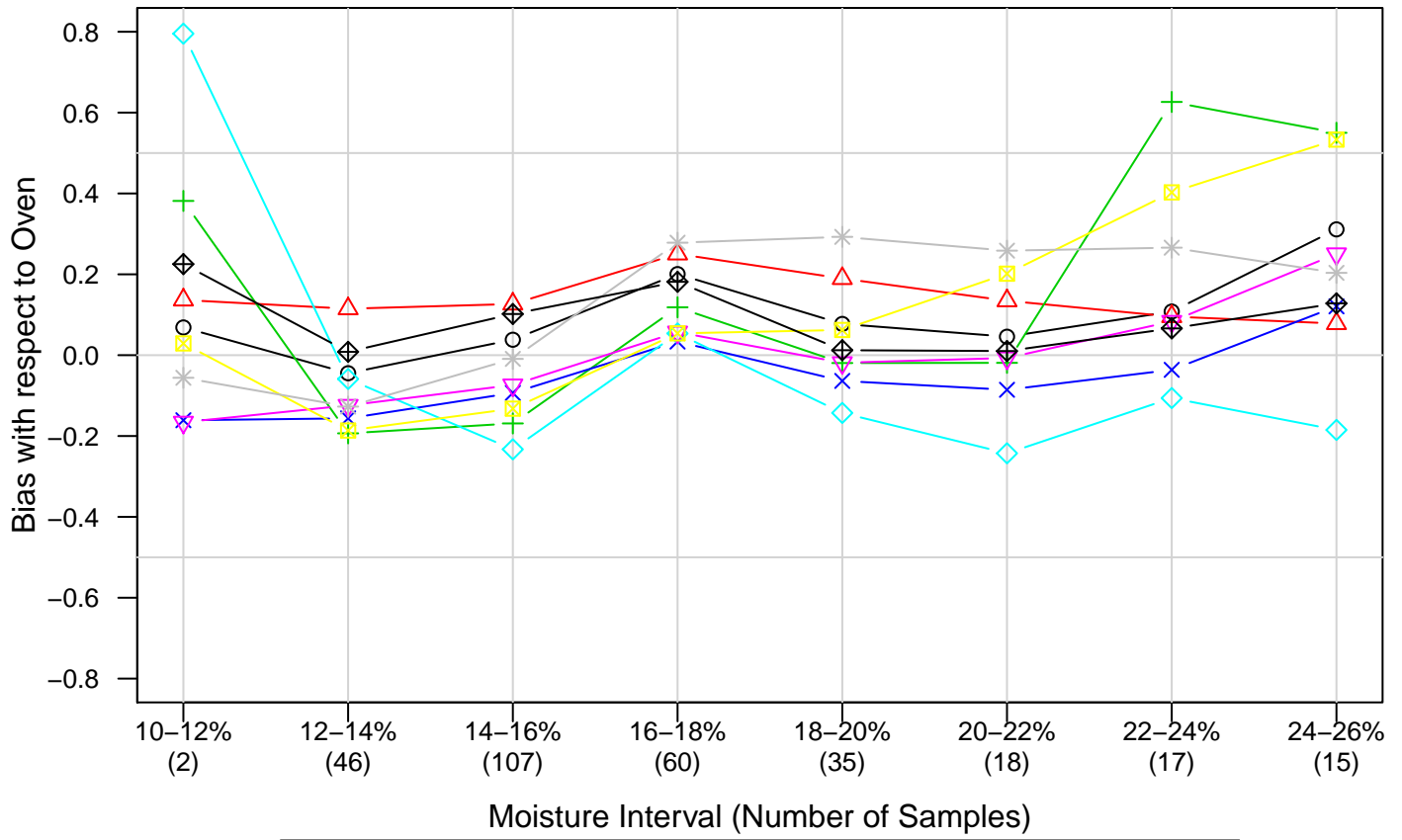
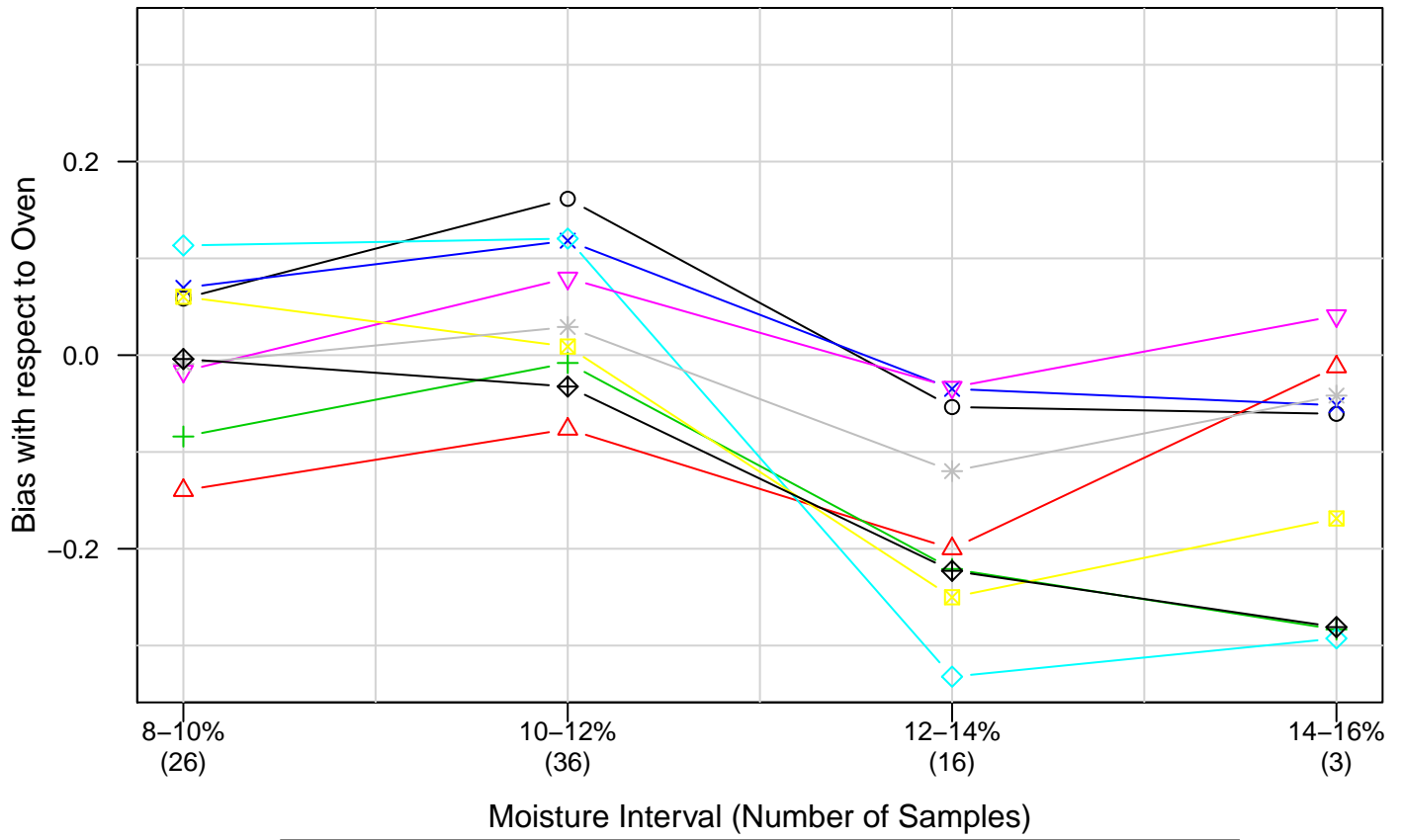


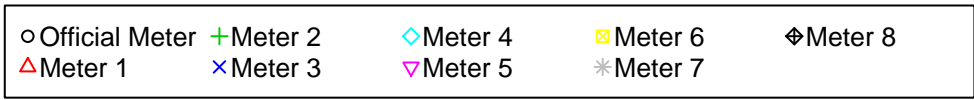
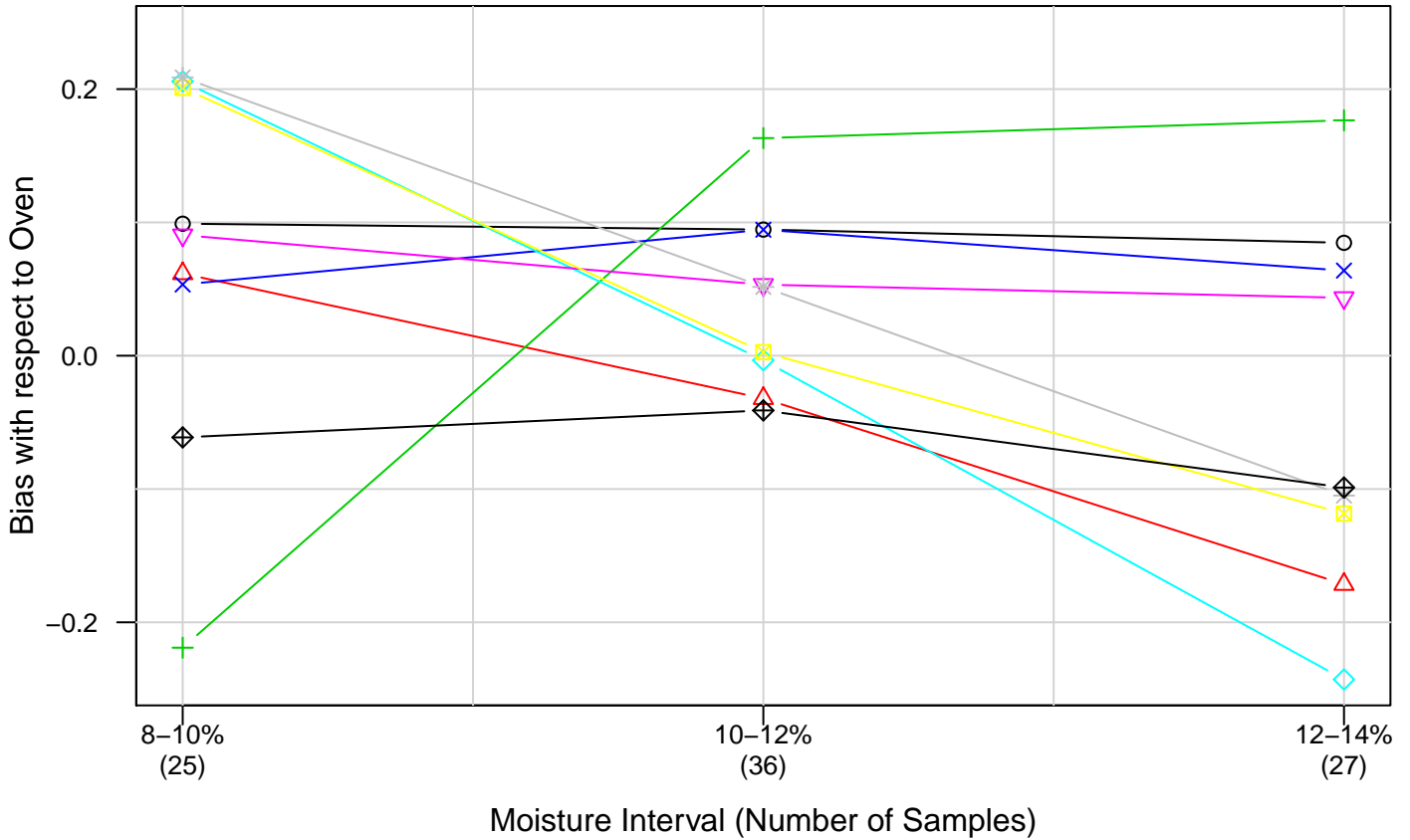
### Moisture Meter Comparison – Corn (2017 – 2019 Crop)



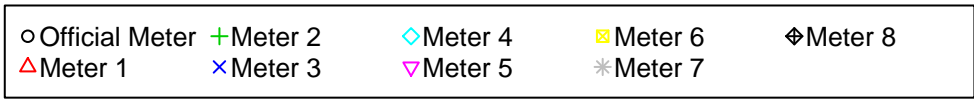
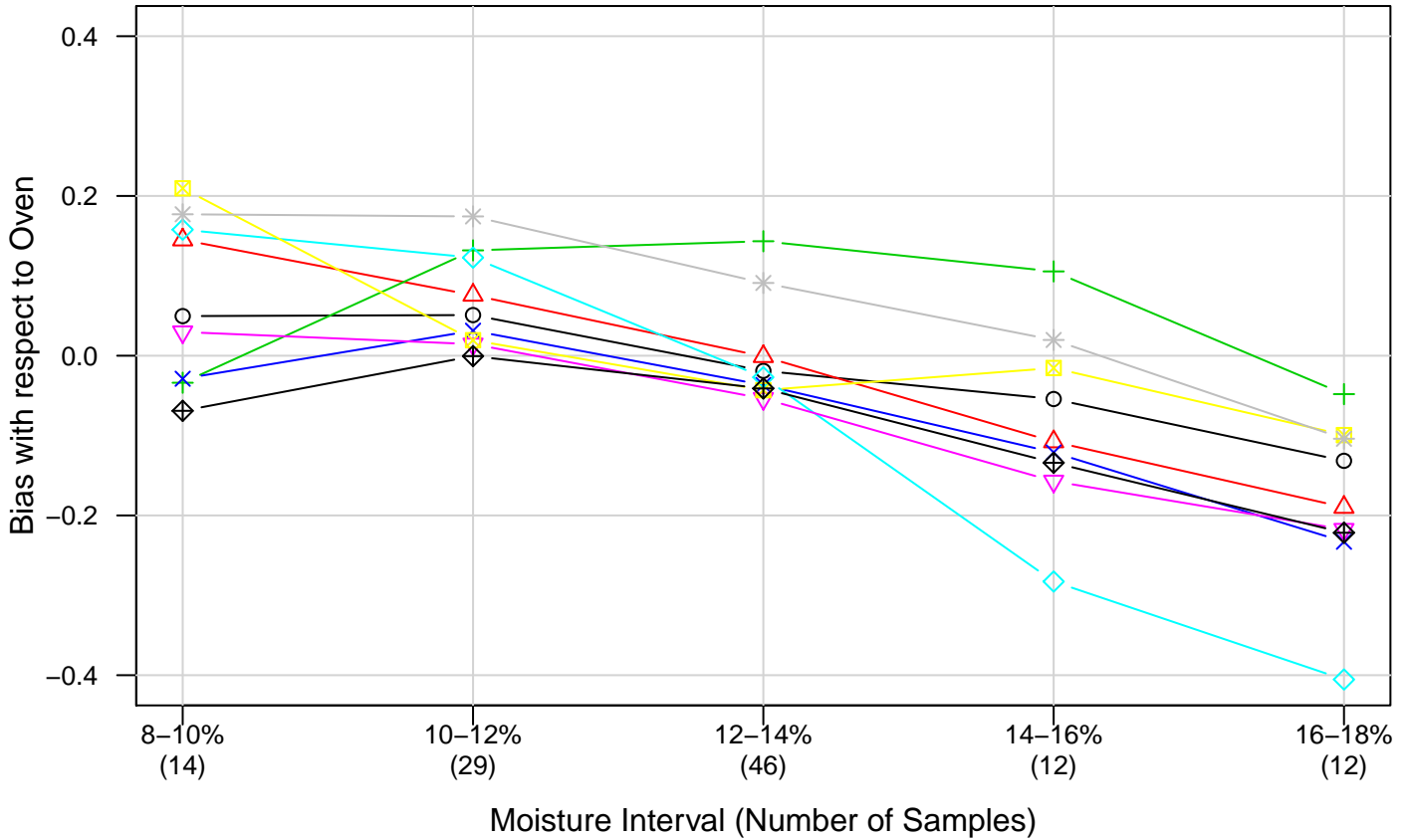
### Moisture Meter Comparison – Durum Wheat (2017 – 2019 Crop)



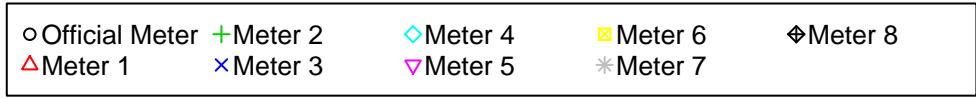
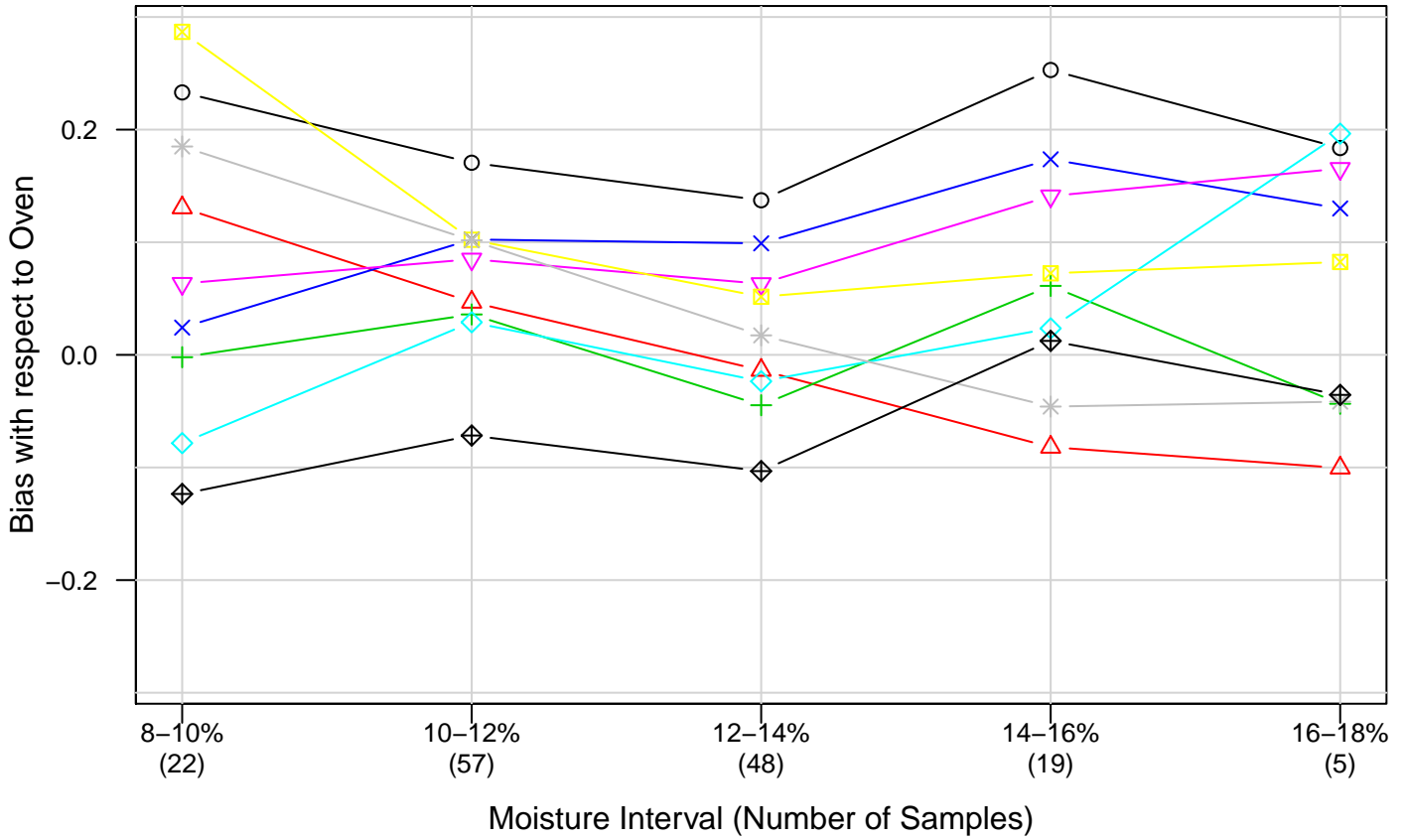
### Moisture Meter Comparison – Hard White Wheat (2017 – 2019 Crop)



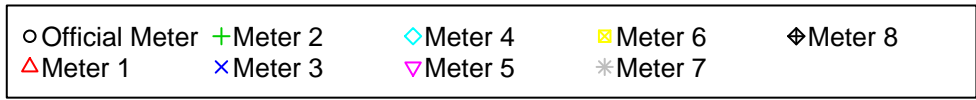
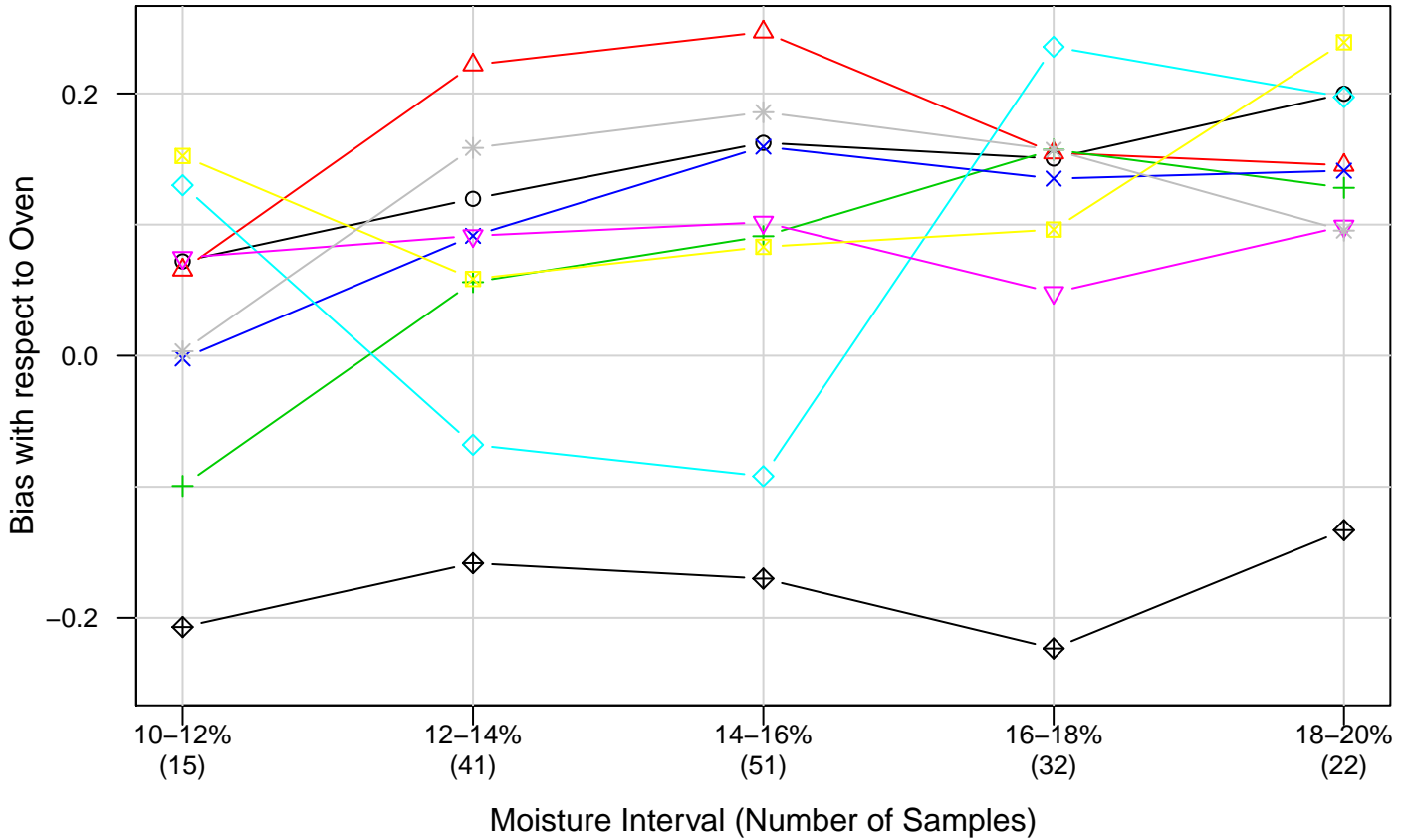
### Moisture Meter Comparison – Hard Red Spring Wheat (2017 – 2019 Crop)



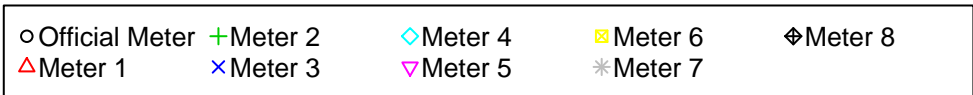
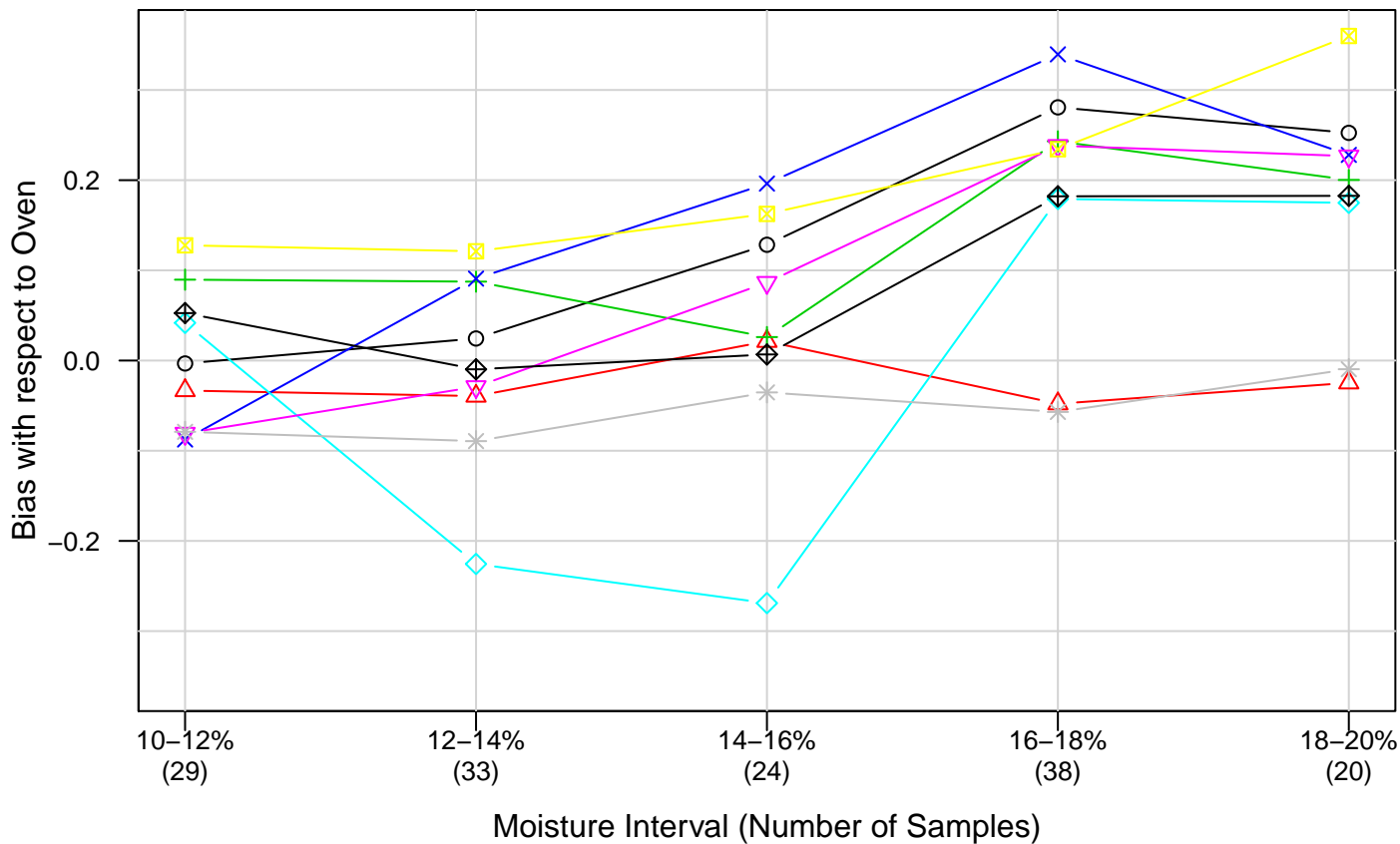
### Moisture Meter Comparison – Hard Red Winter Wheat (2017 – 2019 Crop)



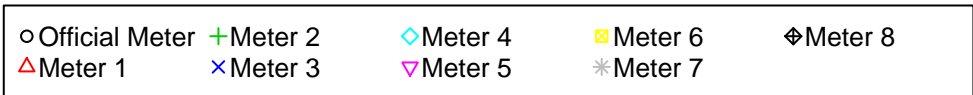
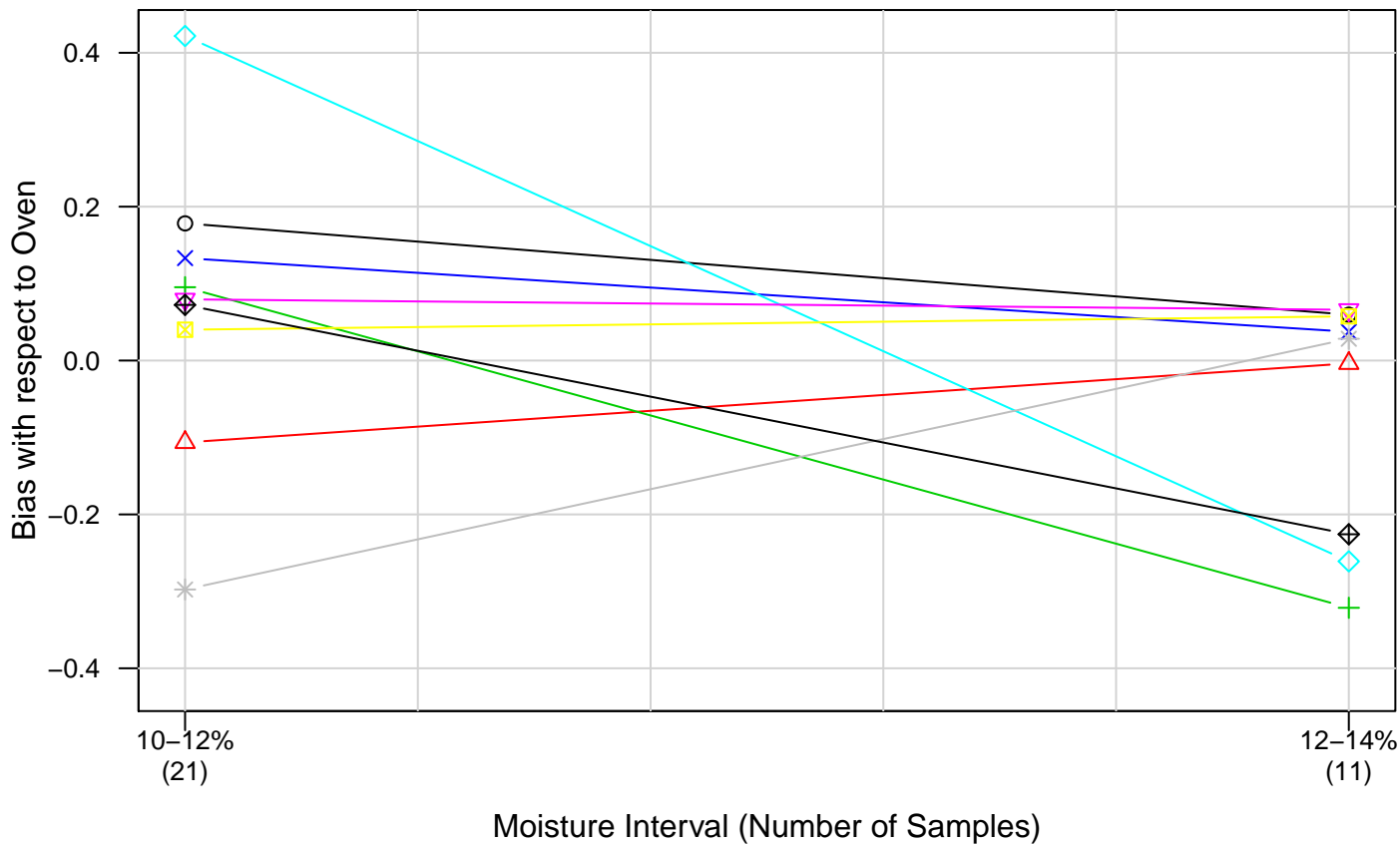
### Moisture Meter Comparison – Long Grain Rough Rice (2017 – 2019 Crop)



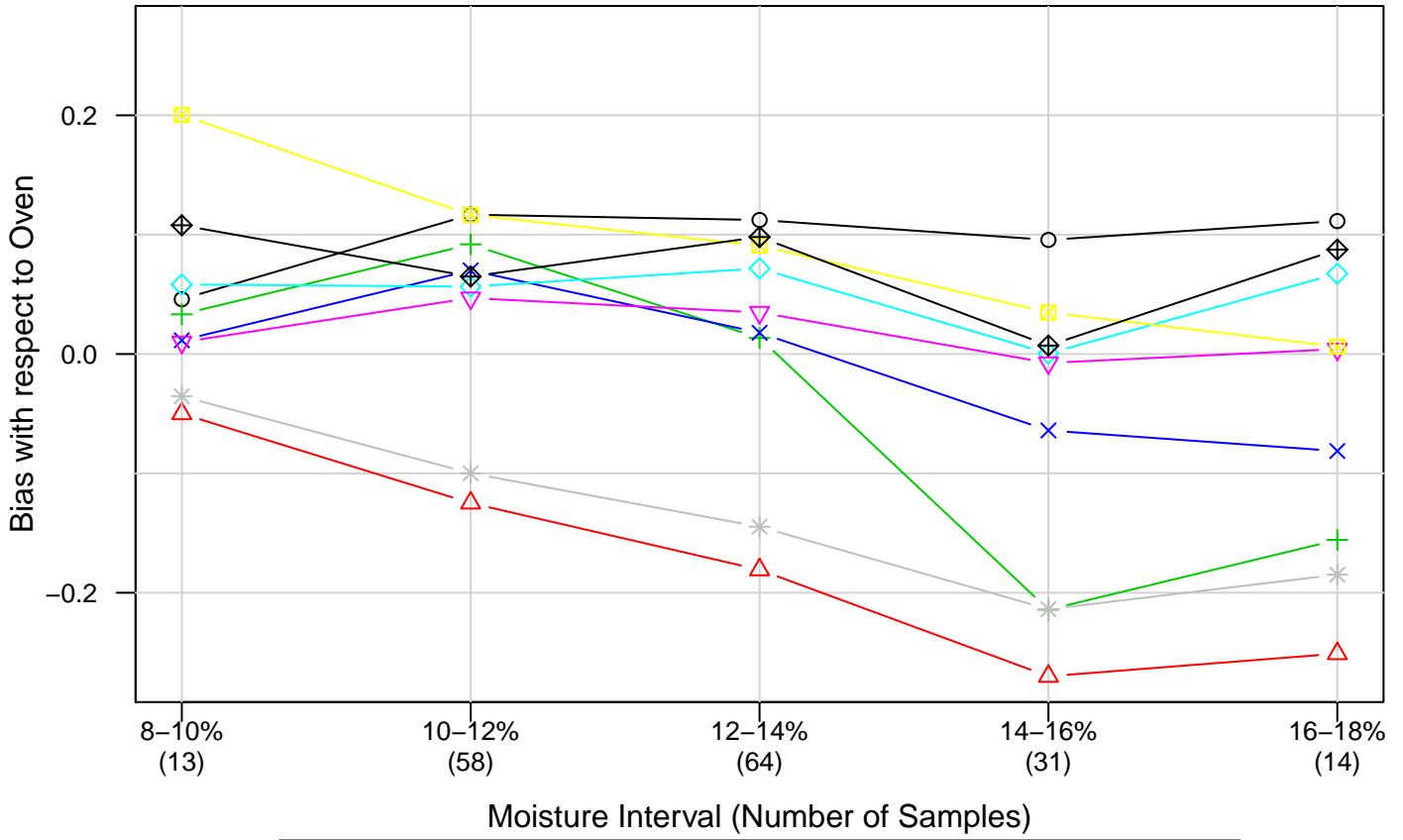
### Moisture Meter Comparison – Med Grain Rough Rice (2017 – 2019 Crop)



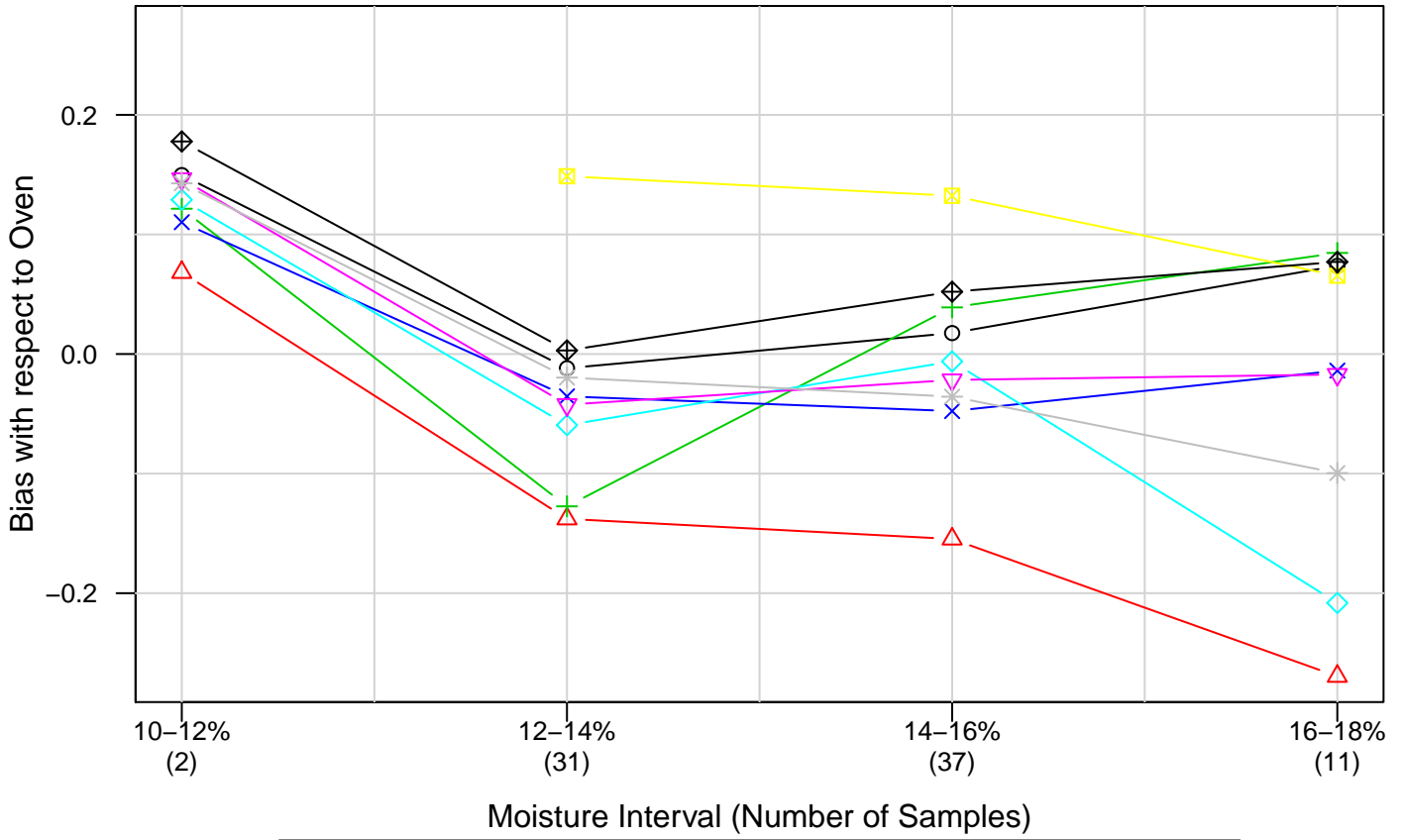
### Moisture Meter Comparison – Oats (2017 – 2019 Crop)



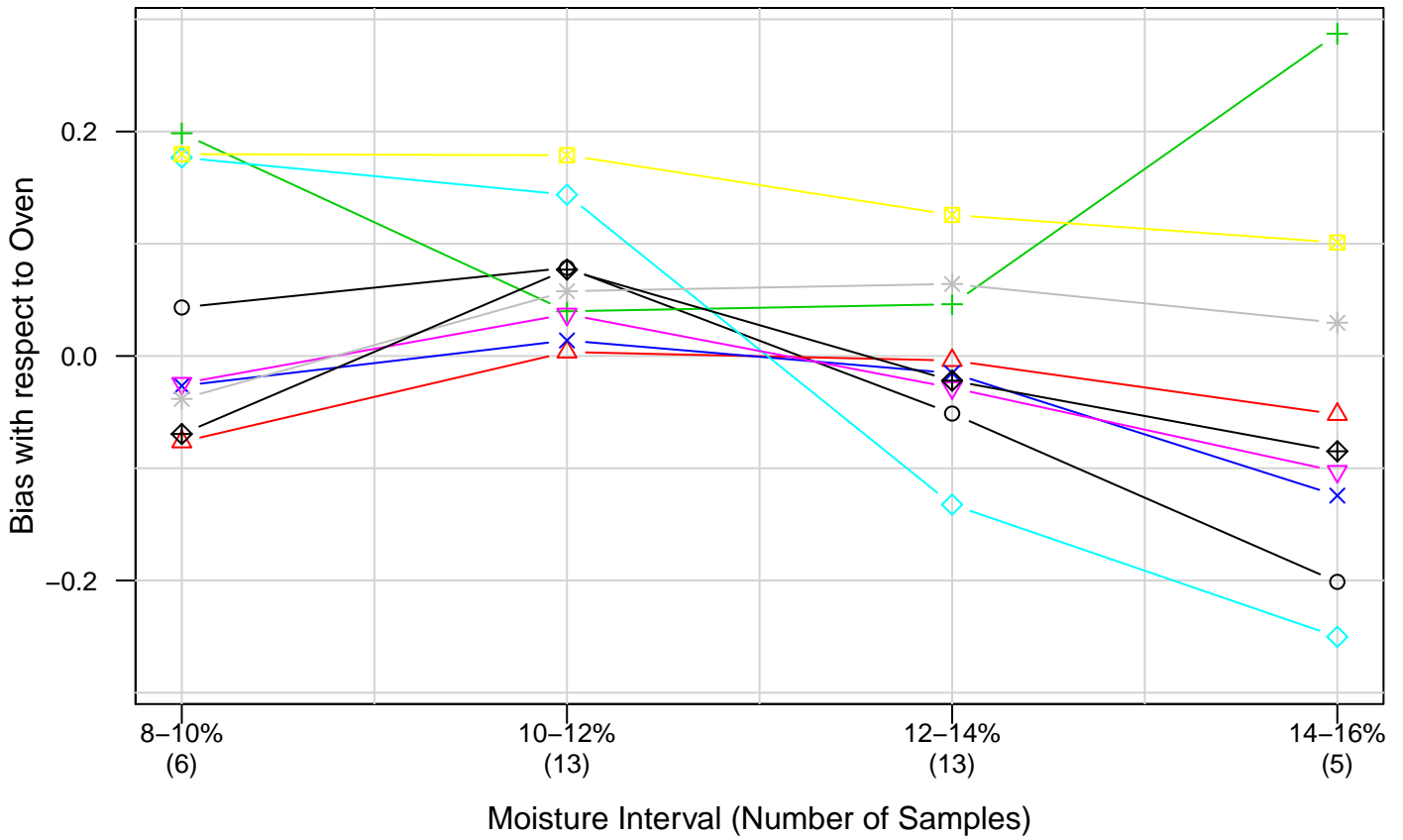
### Moisture Meter Comparison – Soybeans (2017 – 2019 Crop)



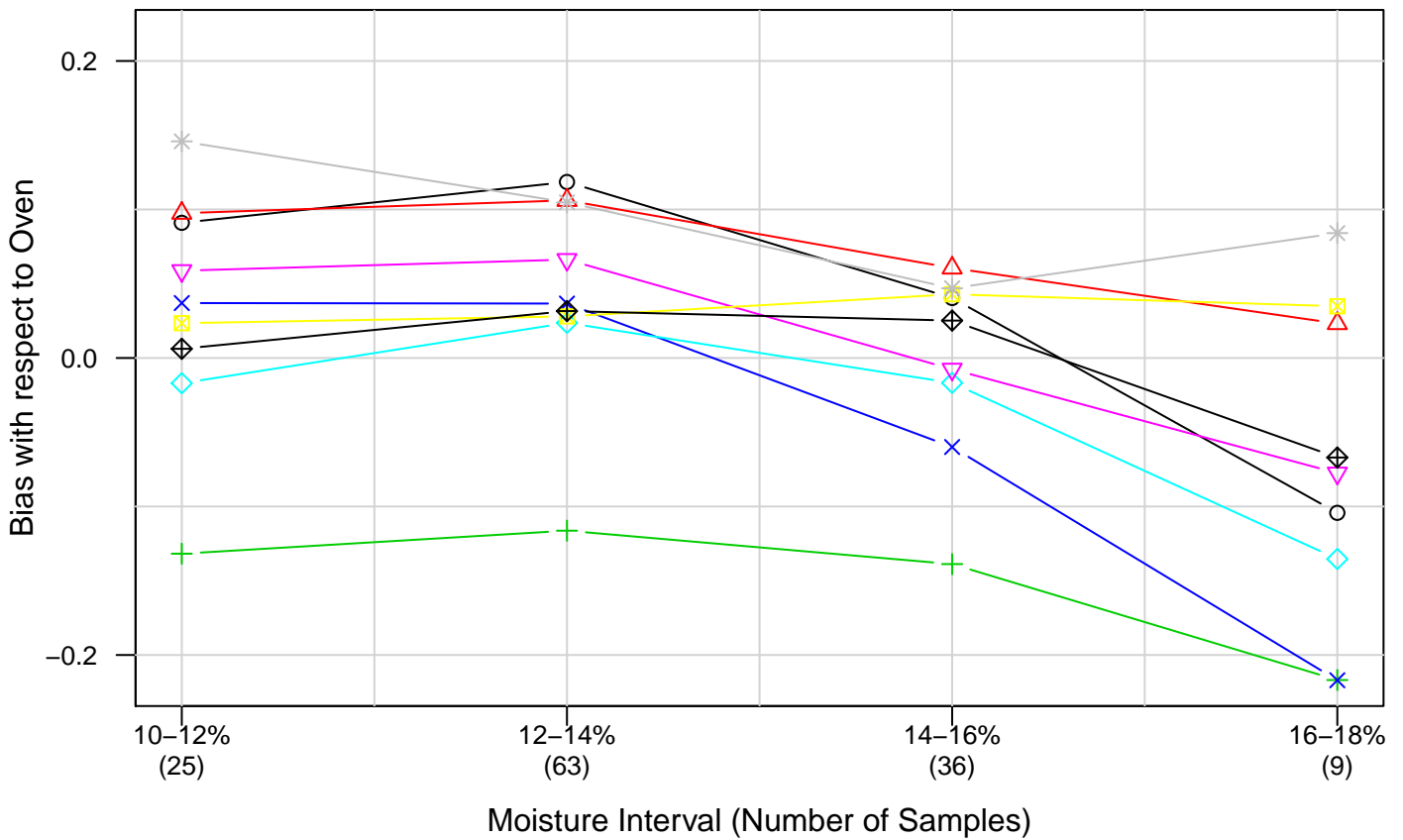
### Moisture Meter Comparison – Sorghum (2017 – 2019 Crop)



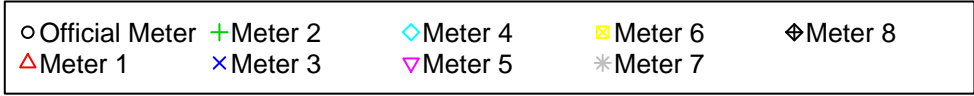
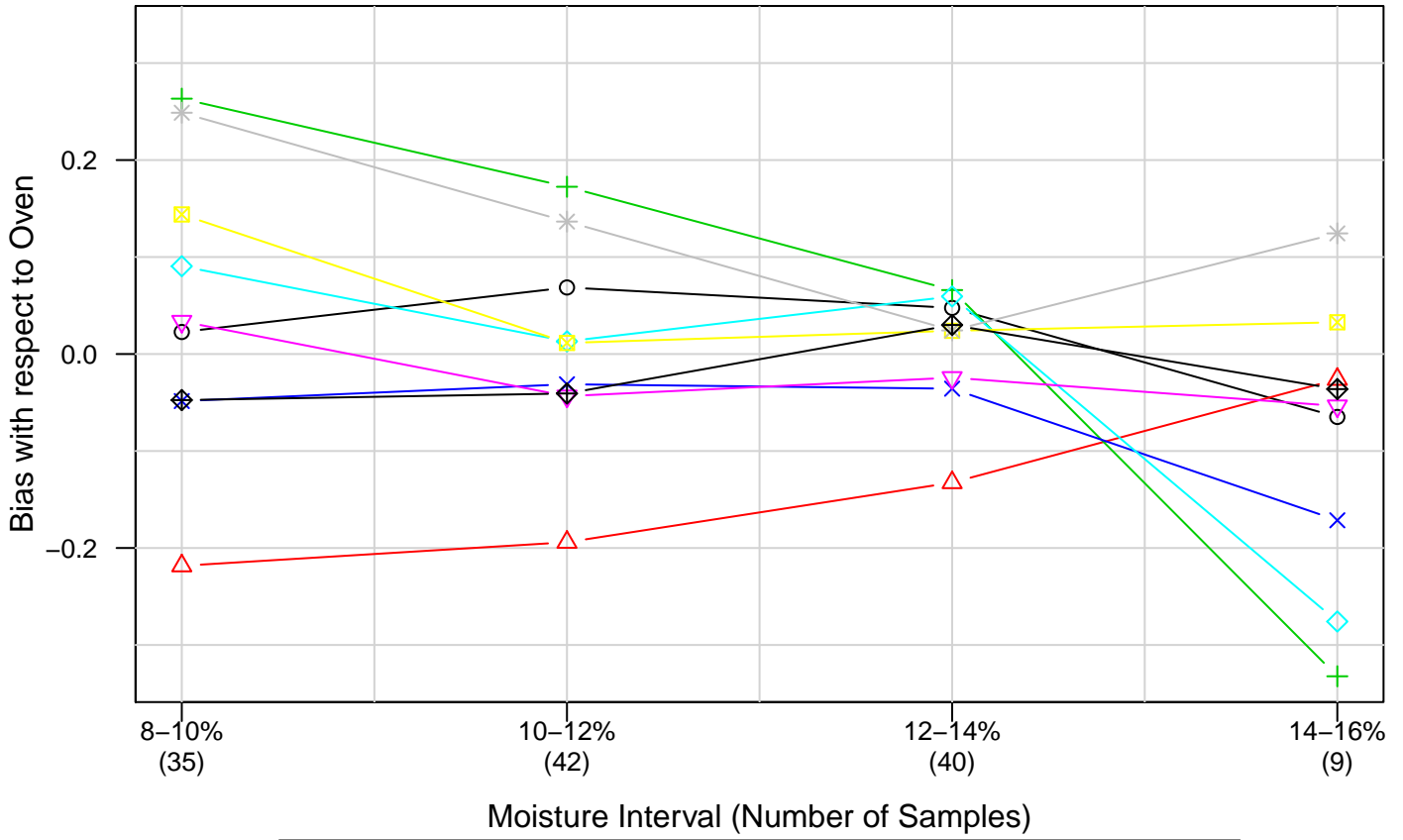
### Moisture Meter Comparison – Six-Row Barley (2017 – 2019 Crop)



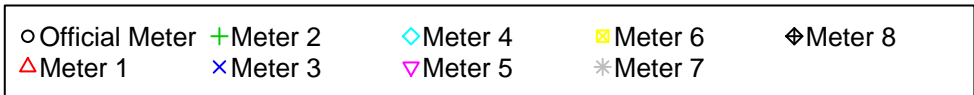
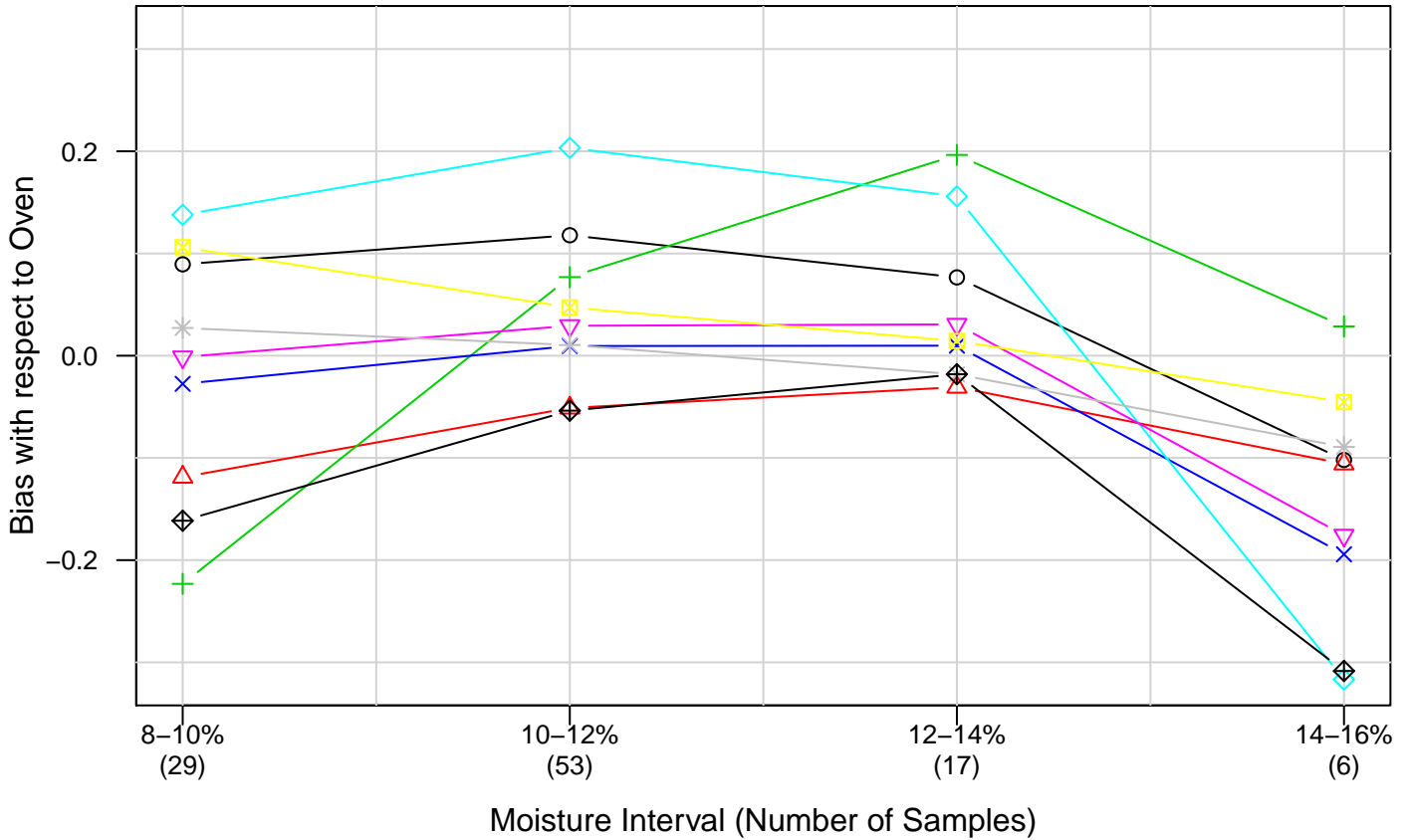
### Moisture Meter Comparison – Soft Red Winter Wheat (2017 – 2019 Crop)



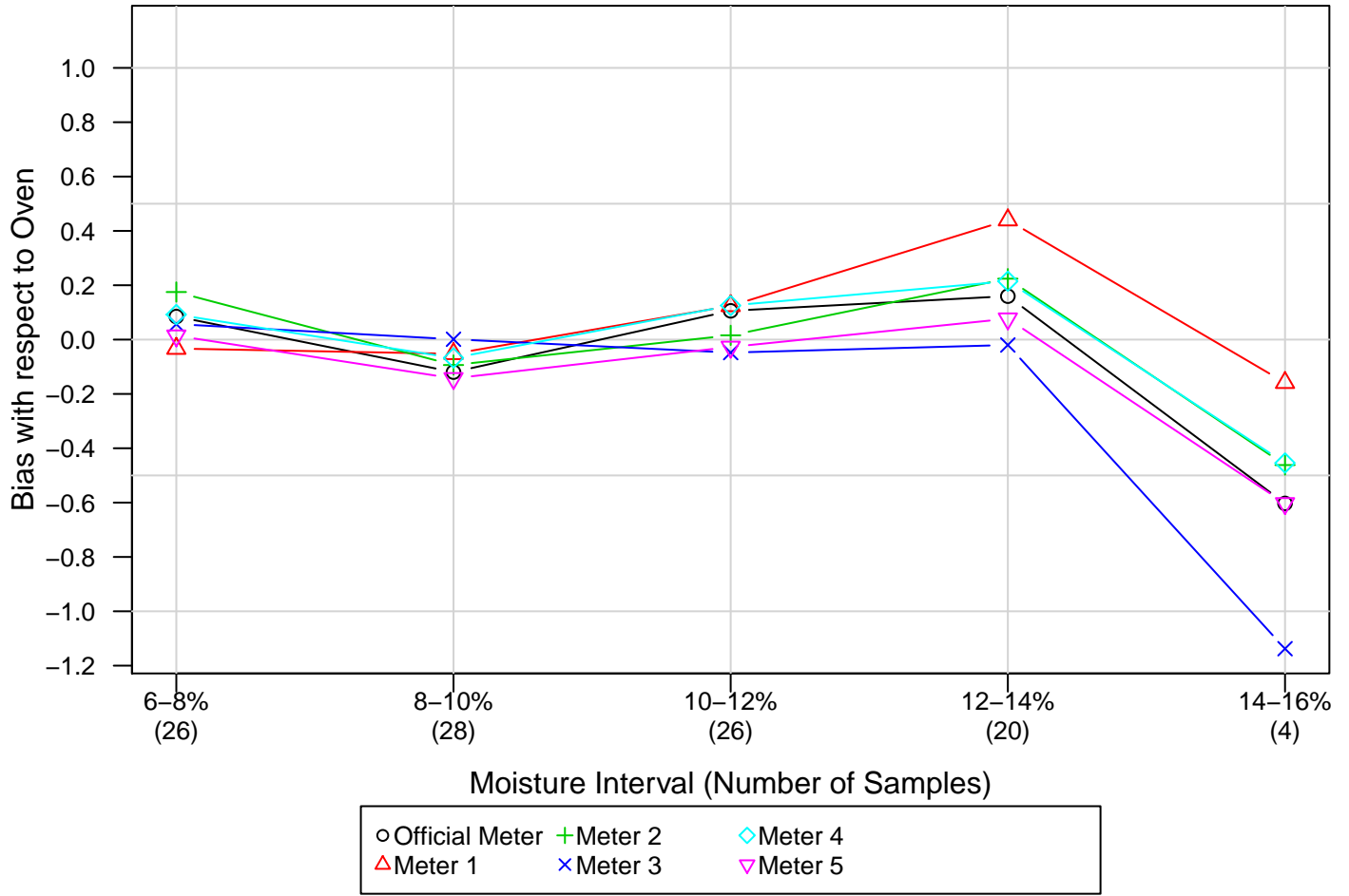
### Moisture Meter Comparison – Soft White Wheat (2017 – 2019 Crop)



### Moisture Meter Comparison – Two-Row Barley (2017 – 2019 Crop)



## Moisture Meter Comparison – Sunflower (2017 – 2019 Crop)



On May 1, 2013, the USDA FGIS official moisture meter for all fifteen NTEP grains switched to the Unified Grain Moisture Algorithm (UGMA) technology. The Official Meter designation in the above comparison charts is for the UGMA master system.